

„Kurt“, Bruker Avance Neo 400 MHz

Named after NMR Nobel laureate Kurt Wüthrich

NMR data server is accessible via FTP. Please consult your head of department or Christian Tontsch (NMR service OC I) for the login credentials.

Content:

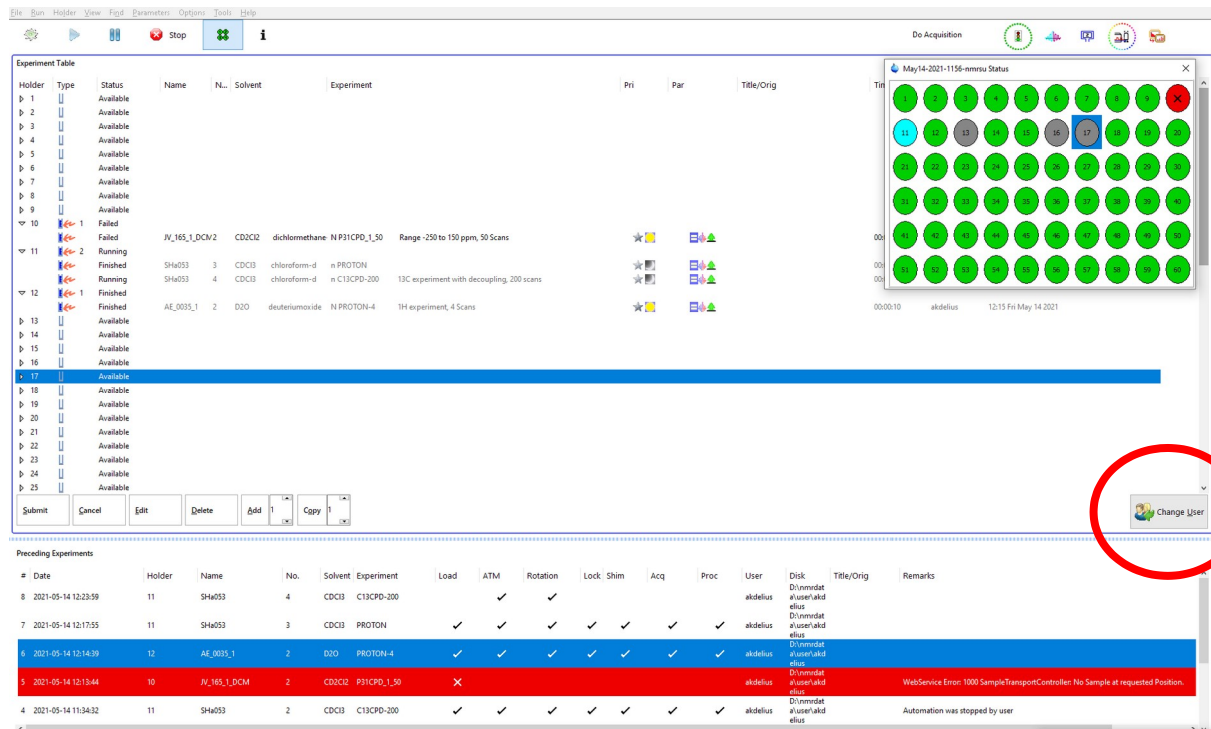
- Automation guide (IconNMR)
- Autosampler guide (Bruker Sample Case Plus)

Automation guide (IconNMR):

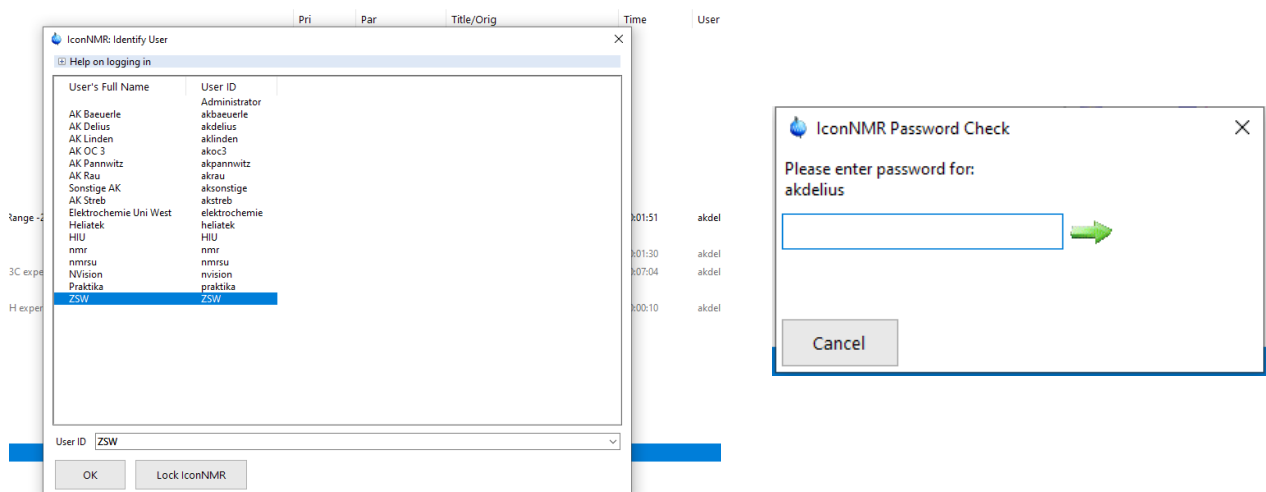
If you are an experienced NMR user, not much has changed with the new software version of Icon NMR. „Kurt“ runs in Automation mode and is best suited for „standard“ experiments.

Limitation of experiment time is **12 min** for daytime measurements, if your experiment takes longer it will be automatically queued for night measurements (or run immediately, if no other experiments are in the queue).

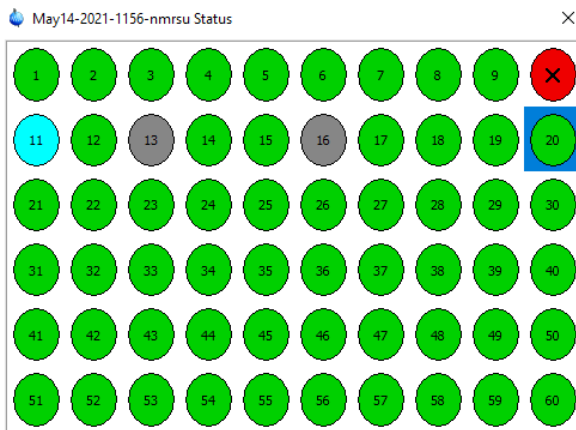
Normal interface:



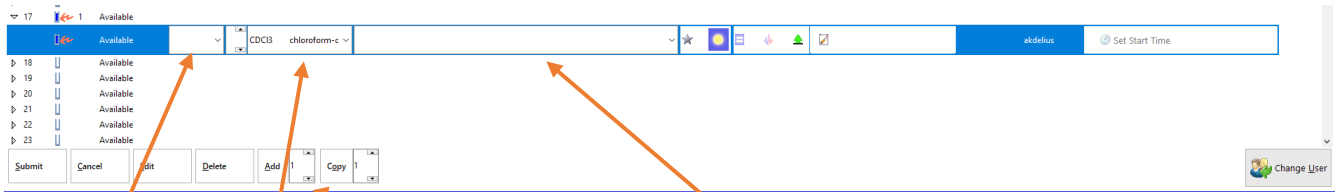
Start by clicking „Change User“, select your working group and fill in your password.



Identify your sample position and double-click respective number.

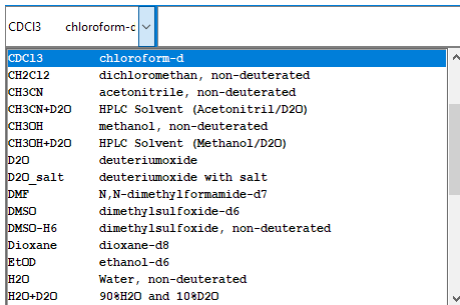


Fill in the information for your experiment.

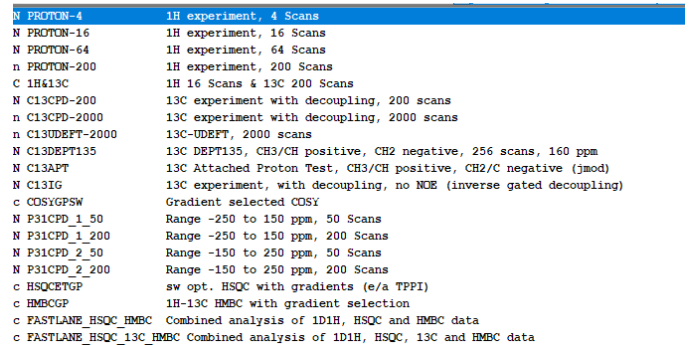


Sample Name

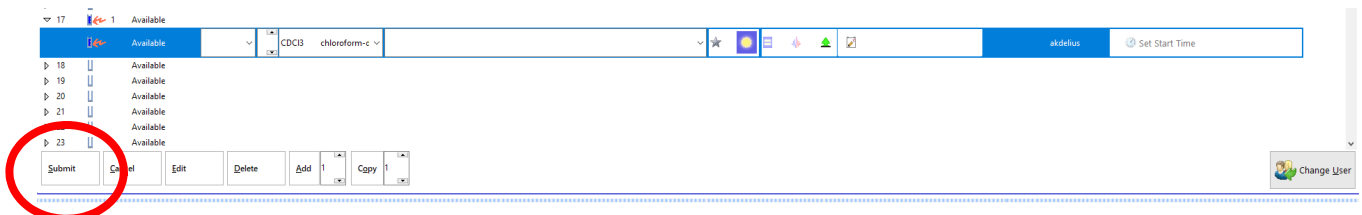
Solvent. If your standard solvent is missing in this list, write us an email.



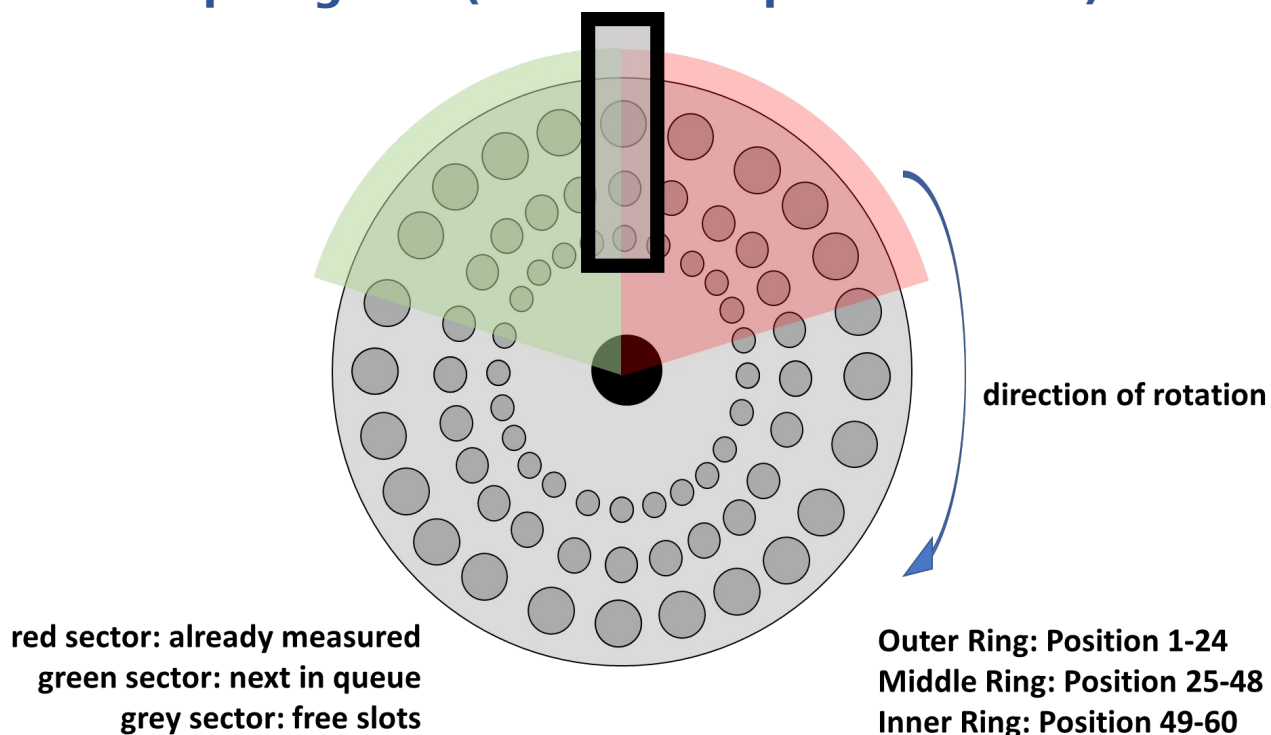
Experiments. If you want to execute more than one experiment, use the „Add“ button. Depending on the measurement time, your sample might be assigned to night measurements. If your standard experiment is missing in this list or you need adjusted parameters, write us an email.



If everything is correct, click „Submit“. Done.



Autosampler guide (Bruker Sample Case Plus):



Where to put your sample? => next free position with lowest ongoing number.

Example: Slots 11-15 and 16-20 are filled, position 18 is in progress: => use position 21.



Sample Case Plus autosamplers will be used on all new NMR-spectrometers. Button usage for manual autosampler control should be **avoided**.

For sample preparation and autosampler usage check out our short [instructional video](#) !

Samples should always be homogenised and additionally filtrated from undissolved matter before being transferred into an NMR tube !