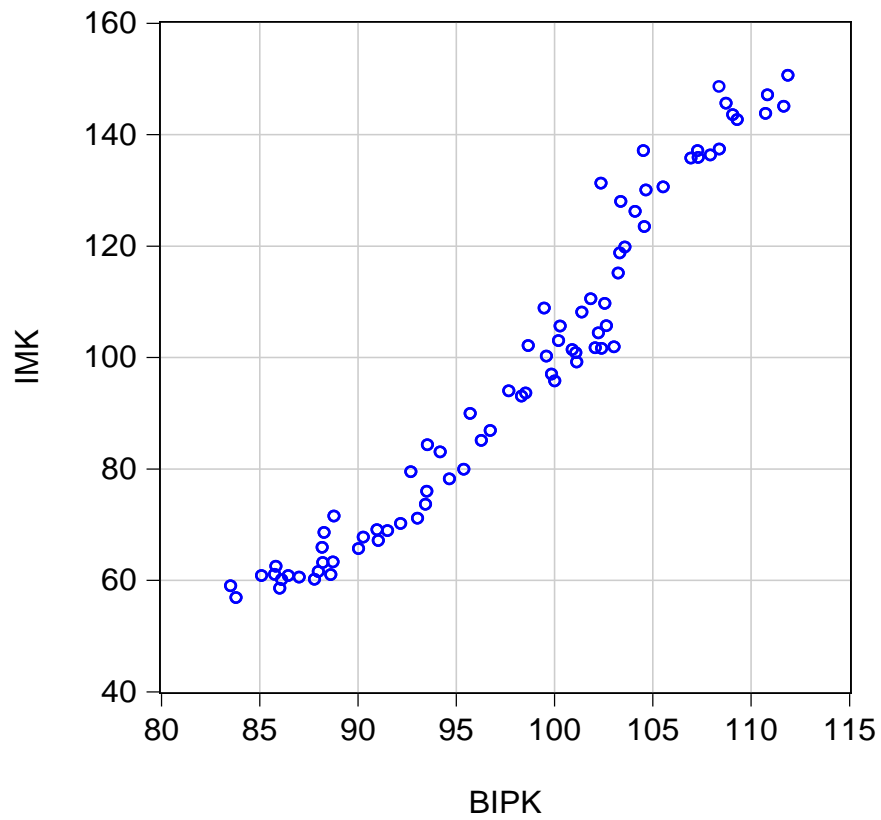
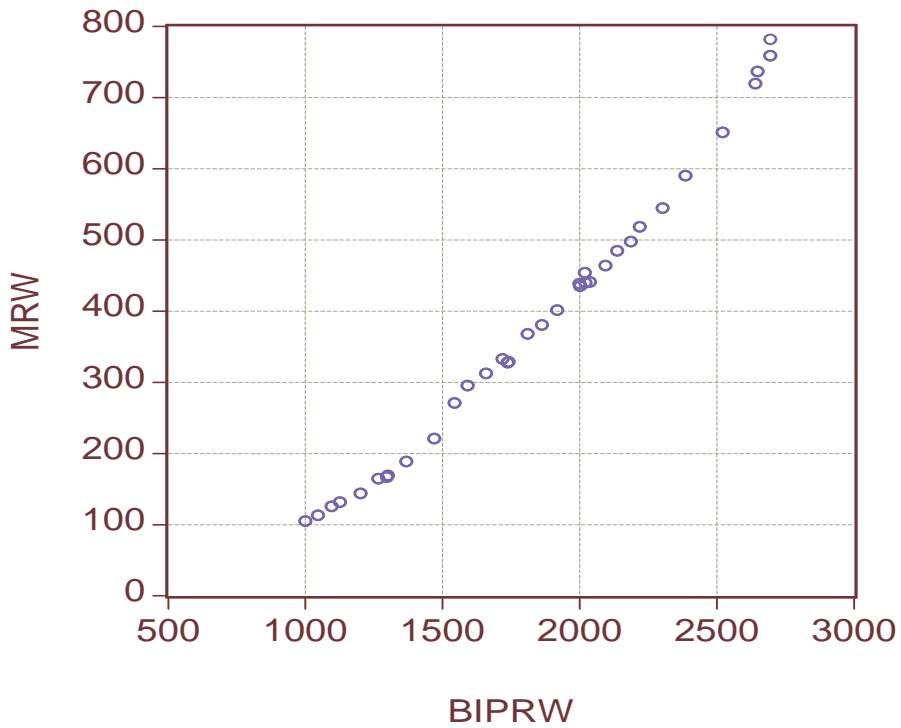


# Importe und BIP

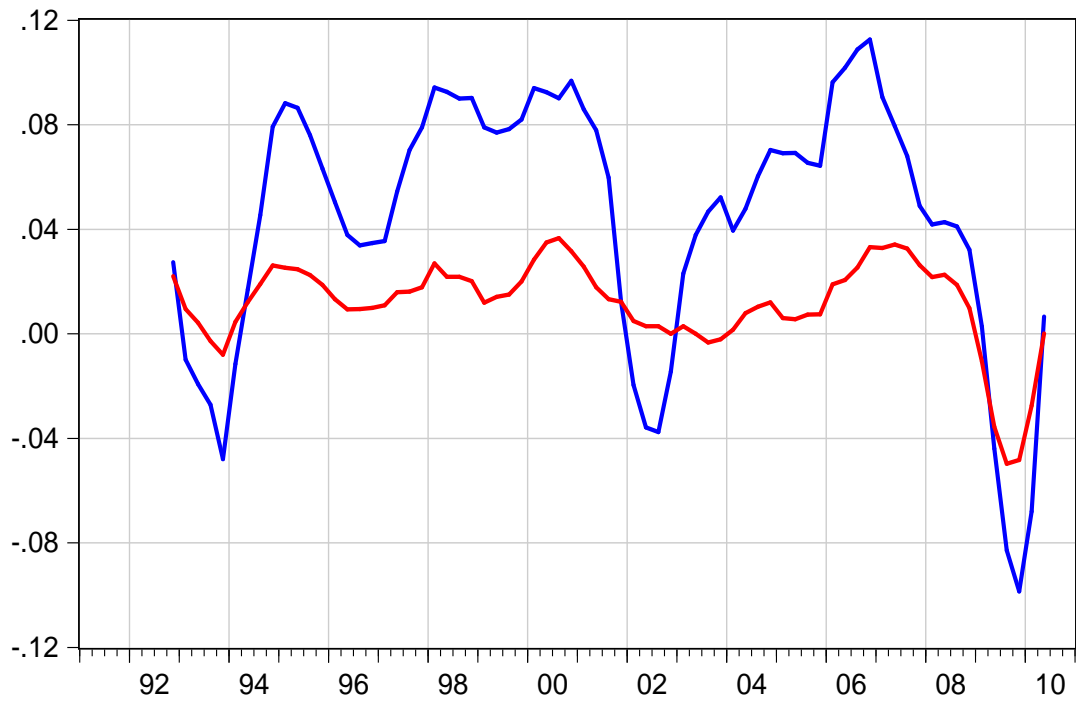


*realer Index, Indexwert 2000 = 100, Gesamtdeutschland, 1991.1 - 2010.2*

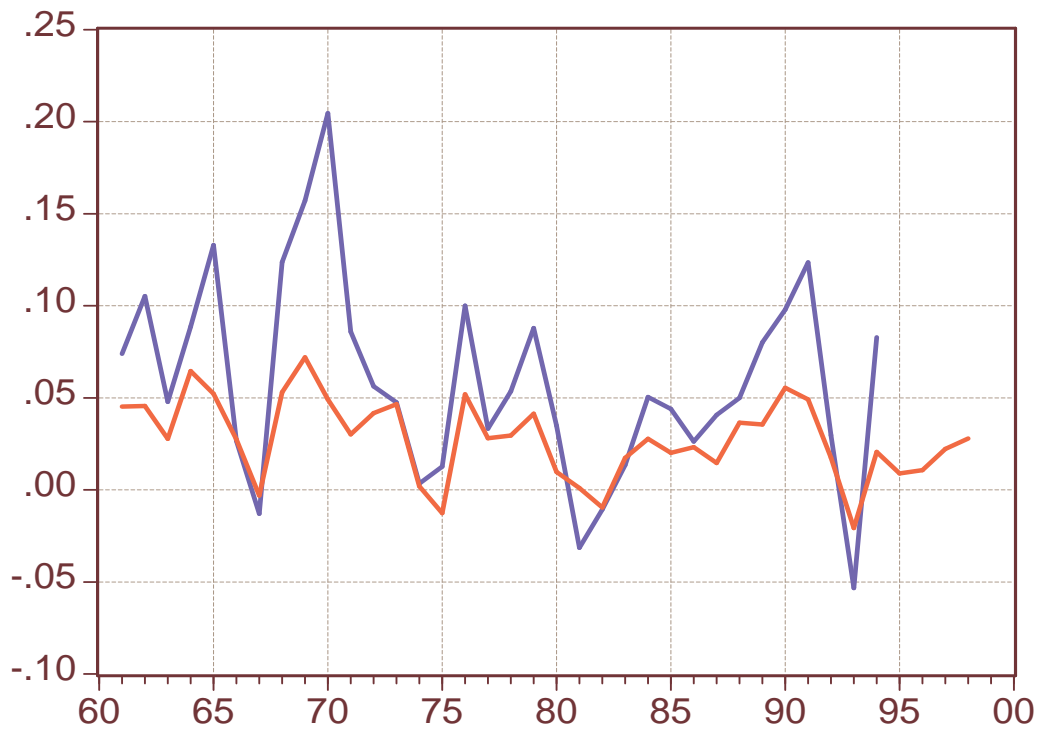


*Westdeutschland, real, Preise von 1991, 1960 - 1994*

## Importe und BIP, Veränderungsraten

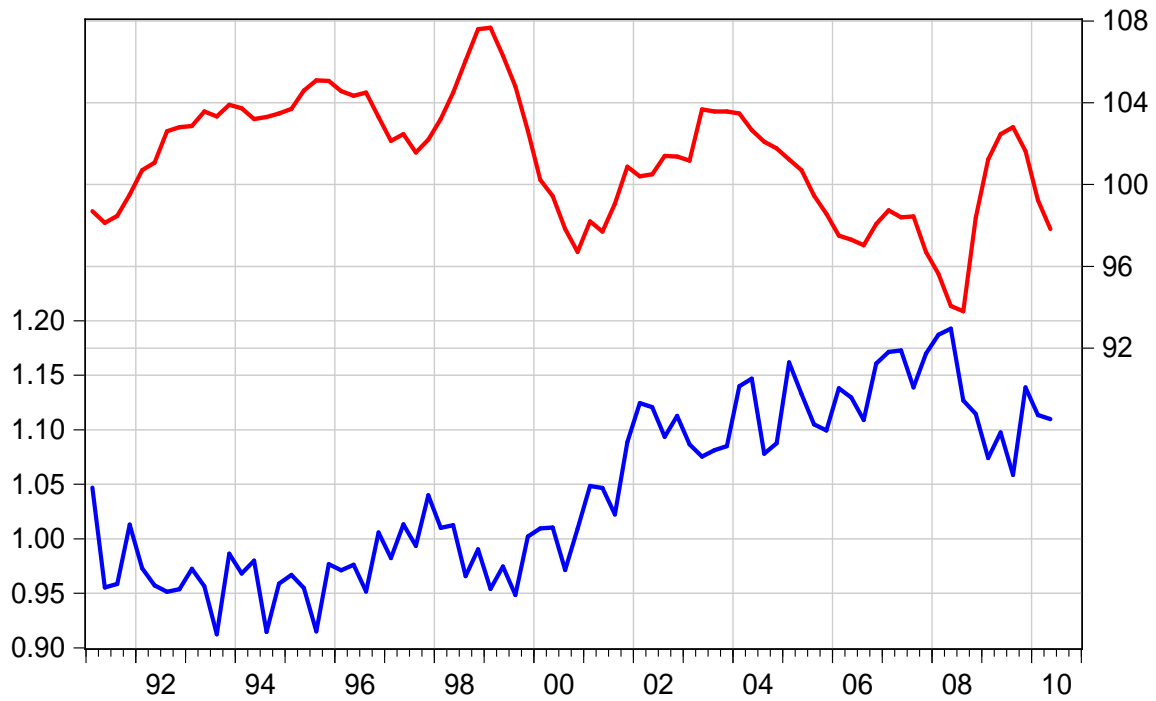


*gleitende Jahresänderungsraten, Gesamtdeutschland, real*

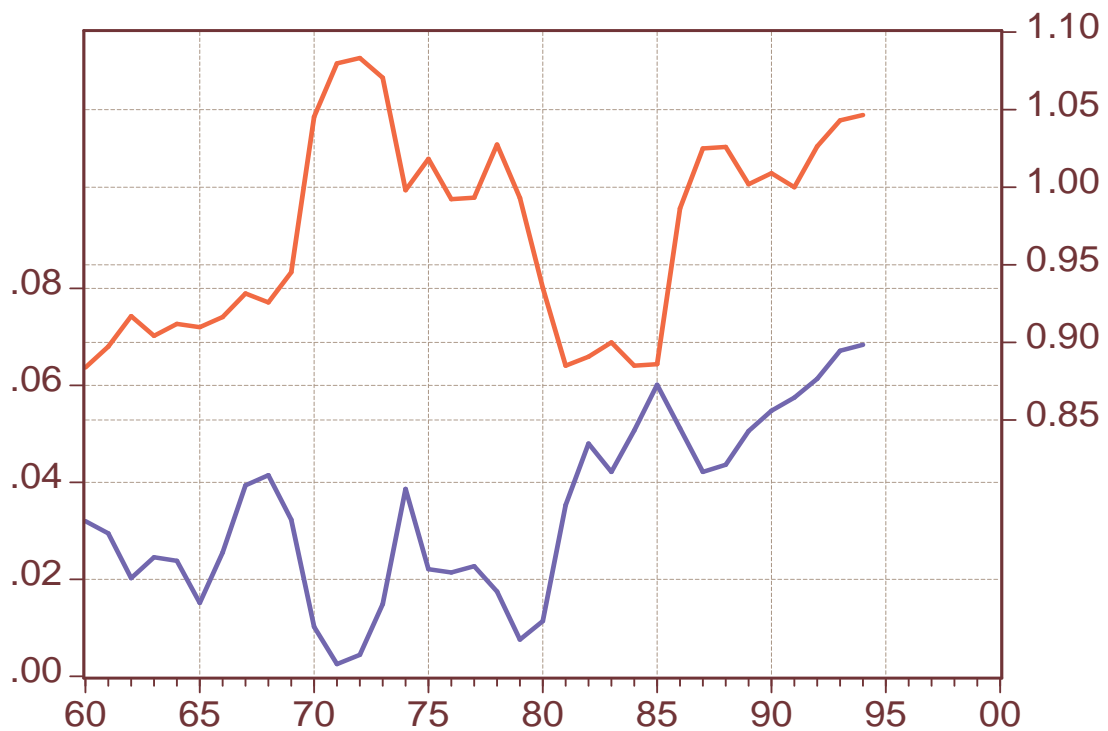


*Jahresänderungsraten, Westdeutschland, real*

## Handelsbilanz und terms of trade

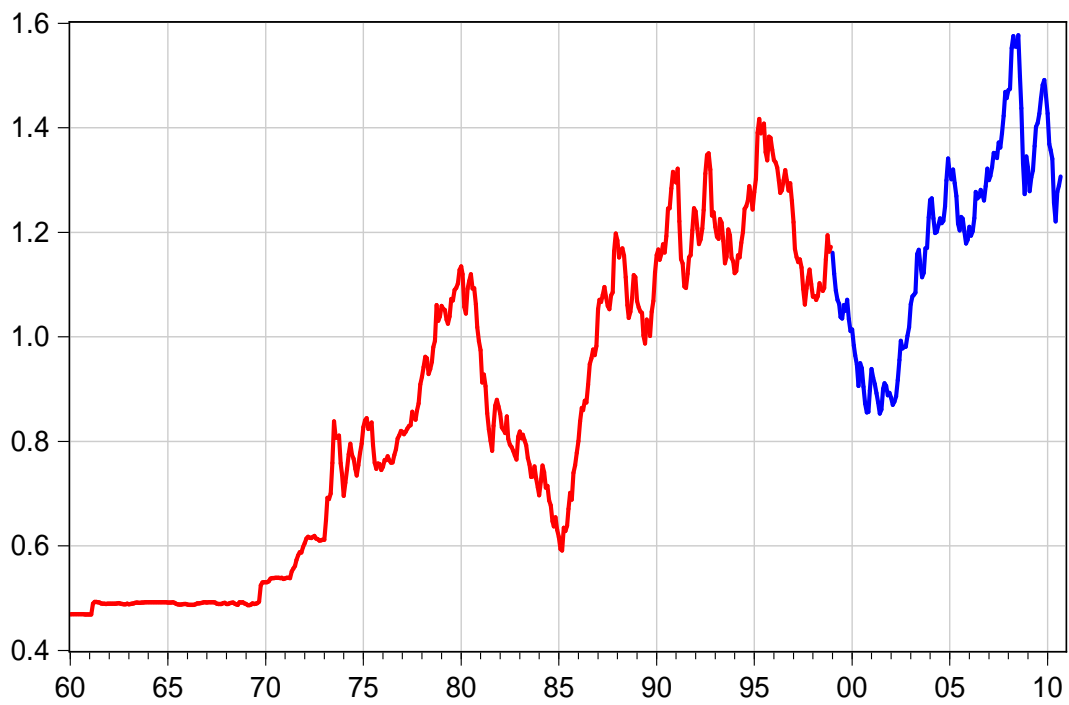


Geamtdeutschland, Indexwerte 2000 = 1, Exportpreis/Importpreis (Index 2000=100)



Westdeutschland, Anteil am BIP, Index 1991=1

Wechselkurs, US-Dollar pro Euro, pro 1,95583 DM



3-Monats-Zinssatz, Euro (DM), US-Dollar

