

# ulm.neu-ulm at a glance

Informative City-Guide · **ENGLISH**

with  
city  
map



[www.tourismus.ulm.de](http://www.tourismus.ulm.de)

Naturkundliches Bildungszentrum Ulm

# Das lebendige Museum in Ulm



Stadt Ulm  
Naturkundliches  
Bildungszentrum

**ulm**

Kornhausgasse 3 - tel. 0731/161-4742  
[www.naturkundemuseumulm.de](http://www.naturkundemuseumulm.de)  
Öffnungszeiten Di-Fr 10-16 Uhr,  
Sa, So und an Feiertagen 11-17 Uhr

[www.tourismus.ulm.de](http://www.tourismus.ulm.de)

Please ask for our newsletter!

# ulm.neu-ulm

<b>History</b>	2
<b>Guided tours</b>	4
<b>Tourist Information</b>	6
<b>Events</b>	8
<b>Sights</b>	12
<b>Museums</b>	17
<b>Culture</b>	24
<b>Leisure</b>	26
<b>Shopping</b>	30
<b>Children-fun</b>	32
<b>Disabled access</b>	33
<b>Surrounding area</b>	34
<b>Useful information</b>	36
<b>Public transport</b>	38
<b>Index</b>	40

# History

**Old news? If you are not interested in history, just turn the page. But if this short summary is too brief for you, find out more on location – e.g. at the Haus der Stadtgeschichte (Ulm's House of History), see page 14, or on a historical city tour.**



## 5000 BC

Oldest settlement in the Ulm region in the early Neolithic period.

## 854

King Ludwig the German seals a document in "Hulma", creating the first official reference to Ulm on July 22, 854.

## 1184

Ulm receives the status of Free Imperial City.

## 1377

Construction of the Ulm Minster as a townspeople's church begins on June 30, 1377.

## 1397

The Ulm constitution – the "Great Civic Oath" – comes into effect, controlling the distribution of power between the Guilds and the Patricians. The Mayor of Ulm still makes this oath every year on "Schwörmontag" (Oath Monday).

## 1500

Ulm is a successful trading hub. Above all, there is a great demand in Europe for fustian cloth from Ulm. At the same time, the city is one of the most significant artistic centres in Southern Germany.

**Venice's power,  
Augsburg's glory,  
Nuremberg's humour,  
Strasbourg's weapons,  
and Ulm's money rule  
the world.**

Rhyme from around 1500

## 1530

With a large majority, Ulm's citizens decide to convert to Protestantism.

## 1712

From 1712, thousands of emigrants, "Danube Swabians", use the river to reach what today are Hungary, Serbia, Bulgaria and Romania.

## 1770

The city is declared bankrupt in 1770, due to diseases, war and extortion by a wide range of besiegers.

## 1805

The Battle of Elchingen takes place nearby on October 14, 1805, leading to the handover of Ulm by the Austrians to the victorious Napoleon.

## 1810

Ulm becomes part of Württemberg in 1810. The districts on the right-hand



Ulm around 1650

side of the Danube remain part of Bavaria and quickly develop into the town of Neu-Ulm.

## 1811

Doomed flight attempt by Albrecht Ludwig Berblinger, "The Tailor of Ulm", on the occasion of a visit by the King of Württemberg.

## 1842

Start of construction of the Ulm/Neu-Ulm Federal Fortifications (finished in 1859) as a defence against France. However, they were never needed to defend Ulm.

## 1879

Birth of genius of the century, Albert Einstein, in Ulm.

## 1890

Completion of the Minster spire, which is still the world's highest church spire today.

## 1944

More than 80 % of the historic old town is destroyed during Allied bombing on December 17, 1944. The Minster, however, remains undamaged.

## 1955

The legendary Ulm "Hochschule für Gestaltung" (Ulm College of Design) is founded.

## 1980

Ulm has more than 100,000 inhabitants and becomes a major city. Six years later, Germany's first science park is created here.

## Today

See for yourself ...

# Guided tours

Regular city tours:

Historical, musical, gastronomical ...



**For how long were they building the Minster? Where is the Ulm sparrow? How “new” is Neu-Ulm? These regular walks with trained tour guides offer you entertaining answers to these questions as well as interesting, historical or architectural moments of inspiration. The regular city tours take place in German. Separate group tours in foreign language on request.**

## Walking tour with visit to the Minster

Get to know the twin cities on the Danube with a 90 min. walking tour with educated, experienced tour guides. You'll get interesting explanations concerning history and present of both cities Ulm and Neu-Ulm, pay a visit to the Minster (also the interior), the old town, the historic town hall, the environs of the Danube's river bank and the romantic Fishermen's and Tanners' Quarter.

Booking and meeting point:  
Tourist Information at the Stadthaus.  
1<sup>st</sup> April until 31<sup>st</sup> October:  
Mon–Sat daily at 10 a.m., 2.30 p.m.,  
Sun/holidays at 11.30 a.m., 2.30 p.m.  
1<sup>st</sup> November until 31<sup>st</sup> March:  
Sat at 10 a.m., 2.30 p.m.,  
Sun/holidays at 11.30 a.m., 2.30 p.m.  
Adults € 8, pupils, students  
etc. € 4, family ticket € 12



## Evening stroll through the old town

It gets romantic with a 90 minutes guided tour through the illuminated old town and a visit to the Fishermen's and Tanners' Quarter.

Booking and meeting point:  
Tourist Information at the Stadthaus.  
April–October, every Tue and Thu  
(except public holidays) 7.30 p.m.  
€ 13 p.p. (incl. drink)

## Guided Tour “Mighty sounds”

This offer contains the conventional city tour with an organ concert at the Ulm Minster – remarkable! Duration approx. 2.5 h.

Booking and meeting point:  
Tourist Information at the Stadthaus.  
May–September: Tue–Sat 10 a.m.  
Adults € 10.50 p.p., pupils  
students € 7



## With the night-watchman through Ulm

"10 o'clock and all's well ..." Long ago this is how night-watchmen made their rounds through many cities. In Ulm you can still listen to their anecdotes today. Approx. 90 min.

Registration and meeting point:  
Restaurant Gerberhaus, Weinhofberg.  
Jan.–March and Sept.–Dec.:  
Wednesdays at 20.30.  
April–Aug.: Wednesdays  
at 21.30.  
P.p. € 9  
concessions € 5



## Sightseeing tour by coach

Experience the twin cities on the Danube in a comfortable way while sitting in a coach and admire the interesting sights.

Dates: May–September: Sat 2 p.m.  
(meeting point coach parking-area  
Glöcklerstraße).

Costs: Adults € 13, with reduction  
€ 7, family ticket € 20



**Guided city and Minster tours  
for visually handicapped and blind  
guests (see p. 33).**

**TIP**

## Independently: Audio guide

### **itour Audio guides (german/english) available for hire**

But you want to discover the city on the Danube all by yourself?  
Then hire the i-Tour Guide from the **Tourist Information Office!**

The mini computer, including headset, will lead  
you through the city in an entertaining way.

The technology is easy to use and allows you  
to choose your own route. Your valid ID card  
or passport is required as a deposit.

Rental costs: € 7.50 (3 hours),  
€ 10 (overnight), € 2.50 (second headset).



### **Your mobile phone travel guide**

A travel guide on your mobile: From your  
mobile phone, dial 08122 999 95 60 plus a final  
digit, and you will be informed about the place

of interest of your choice. For this service, you only pay the connection  
fee from your mobile to the German fixed line network.

You can find a list of the places of interest and corresponding final  
digits at **[www.tourismus.ulm.de](http://www.tourismus.ulm.de)**. The information texts are also  
available here as a free download for your MP3 player.

**New: now available as iPhone app!**

**ulm app** – There is an app for everything ... and now there  
is one for Ulm! You get all information on places of interest,  
accommodation, shopping as well as on services for  
citizens and the current parking situation in the city centre.  
Available for iPhone and Android.





# Tourist Information



**Information, souvenirs, special offers and tips for your stay in Ulm/Neu-Ulm. You can find all this at the Tourist Information Office in the Stadthaus on the Münsterplatz – very central and easy to find. Come on in!**

---

## ulm shop

If attractive bags, travel guide-books, DVD's or smart pins, funny handicrafts of the "Ulm Sparrow" and beautiful postcards – the selection is enormous and the friendly team will advise you.

It goes without saying that we offer you an extensive literature about the twin cities.

Visit our ulm shop at  
**[www.tourismus.ulm.de](http://www.tourismus.ulm.de)**



---

**Tourist-Information  
Ulm/Neu-Ulm  
Münsterplatz 50 (Stadthaus)  
D-89073 Ulm  
Telefon 0731 161-28 30  
Telefax 0731 161-16 41**

---

**January to March**  
Mon–Fri 9 a.m.–6 p.m.  
Sat 9 a.m.–4 p.m.  
**April to December**  
Mon–Fri 9 a.m.–6 p.m.  
Sat 9 a.m.–4 p.m.  
Sun-/Holidays 11 a.m.–3 p.m.

**[www.tourismus.ulm.de](http://www.tourismus.ulm.de)**



# The practical UlmCard

**The UlmCard presents many benefits for you when visiting Ulm and Neu-Ulm:**

- ▶ **Free guided tour** of the Ulm Minster or 3 hours itour with an audio guide free of charge (please see page 5)
- ▶ **Free travel** on all busses and trains operating the city of Ulm/Neu-Ulm from 7 p.m. the day before the date indicated on the card (Danube-Iller Transport System (DING))
- ▶ **Free admission** to: Ulm Museum, Weishaupt Gallery, Naturkundliches Bildungszentrum (Education Centre for Natural History), Museum der Brotkultur (Museum of Bread Culture), Museum im Konventbau (Museum in the Convent Building), Monastery Wiblingen, Edwin Scharff Museum and Donauschwäbisches Zentralmuseum (Danube Swabian Central Museum)

## Including more reductions and gifts:

- ▶ Ulm Minster: EUR 1 off each ticket for climbing the main tower stairs
- ▶ City tour by night "Abendbummel": 50 % off (please see page 4)
- ▶ Tourist information: 10 % off an Ulm shirt, an Einstein cup and an Ulm umbrella
- ▶ AuGuS Theater Neu-Ulm: € 3 off each ticket
- ▶ Theater Ulm: from € 1.50 to € 4.50 off each ticket (depending on the performance)
- ▶ Xinedome Ulm: € 1 off each cinema ticket
- ▶ X-Lounge: getting 2 cocktails or hot beverages for 1
- ▶ Donaubad Wonnemar swimming pool: 10 % off each 4hour/day ticket
- ▶ Bad Blau: 25 % off the regular admission to the sauna and pool area
- ▶ KCC Restaurant Theater: 10 % off the buffet price
- ▶ The zoo "Tiergarten Ulm": 2 entrance tickets for 1
- ▶ The pralines confectionery "Confiserie Chocolat": Buy 250 grams of loose pralines and get 100 grams free
- ▶ The fruit frenzy smoothie bar "Fruchtrausch": Buy 1 smoothie and get 1 frozen yoghurt free (or get your smoothie one size bigger)
- ▶ "Einsteinköpfe", a witty treat, at the Tröglén Café at Münsterplatz square
- ▶ Sweet apple cake at the Lochmühle restaurant in the Fishermen's Quarter
- ▶ A glass of Cidre at the Kornhäusle restaurant
- ▶ A postcard with a historical motif available at the Haus der Stadtgeschichte (town history house)
- ▶ A postcard with Ulm's most beautiful bird at the Kolibri fashion shop at Judenhof

## Prices of the UlmCard:

The blue card for **one day**: single card € 12, groups from 20 persons on each € 10.50

The green card for **2 days**: single card € 18, groups from 20 persons on each € 16.50



Where would the year be without special occasions? You can find an overview of special regular events here, such as Schwörwoche (oath week) or the Christmas market.



## German Championships in Athletics

6<sup>th</sup>–7<sup>th</sup> July 2013

Four years after the German Championship of 2009 there will be a new issue on the 6<sup>th</sup> and 7<sup>th</sup> of July. The best athletes will be welcomed for the 113<sup>th</sup> German Championships at the Donaustadion. For two days the stars of German Athletics will run, jump, throw and push at the Donaustadion show what they are able to. So, during these two days, enchanting duels, title hunting and extraordinary performance is guaranteed.

Infos: Telefon 0731 161-34 52  
[www.leichtathletik.de](http://www.leichtathletik.de)

## Ulmer Zelt (Ulm Tent Festival)

22<sup>th</sup> May–6<sup>th</sup> July 2013

21<sup>st</sup> May–05<sup>th</sup> July 2014

You can enjoy in or around the huge (room for 1200 persons) redblue circus tent, which is situated between the Danube and the lake "Ausee", famous artists and newcomers from all kind of genres. From rock, pop, jazz to comedy, theatre and dance performances. Moreover: special entertainment for kids, delicious food, a beer garden and two flea markets.

Phone 0731 960 85 13  
[www.ulmerzelt.de](http://www.ulmerzelt.de)

## Ulmer Volksfest (Fun fair)

12<sup>th</sup>–22<sup>nd</sup> July 2013

11<sup>th</sup>–21<sup>st</sup> July 2014

The 11-days festival is since all times the beginning of the Oath Week. The annual fair, which takes place since 1429, is full of tradition. The visitors might be thrilled by the cascade and of course by the latest attractions and rides. The fair emphasizes on being a family friendly one, which can be enjoyed by old and young. This means that the fair is really a family alternative on Oath Monday in contrast to the parties downtown.

Tourist Information Ulm/  
Neu-Ulm  
Phone 0731 161-28 30  
[www.tourismus.ulm.de](http://www.tourismus.ulm.de)  
[www.ulmer-volksfest.de](http://www.ulmer-volksfest.de)



## Special Setting for Open Air Theater: Wilhelmsburg castle

Season: 16<sup>th</sup> June to 20<sup>th</sup> July 2013

It has been a long-standing tradition for the Ulm Theater to benefit from the special setting of the Wilhelmsburg castle overlooking the city of Ulm to host a summer open air theater event. In the late 2012/13 season this will result in a nearly five weeks summer open air season. Hoping to attract great numbers of visitors for the covered stands situated in the atrium of the Castle, the theater will put two productions on stage.

First performance of this eccentric rock musical on 16<sup>th</sup> June 2013: HAIR or THE AMERICAN TRIBAL LOVE/ ROCK-MUSICAL featuring renowned international musical stars and live band. A perfect match for Wilhelmsburg castle: Carl Zuckermayer's comedy THE CAPTAIN OF KOEPENICK playing from 30 June 2013.

For performance dates and information on the theater plays, please see the homepage of the theater. Tickets are available at the box office. Please call +49 (0) 731 161-44 44 or go to our homepage [www.theater.ulm.de/karten](http://www.theater.ulm.de/karten).  
**[www.theater.ulm.de](http://www.theater.ulm.de)**

## The Ulm Fishermen's Jousting

14<sup>th</sup> and 21<sup>st</sup> July 2013

After a break of four years the traditional event is back. Since 1662 it takes place every four to five years and is presented by the Sailor's Association. The "Fischerstechen" is nothing less than a tournament on the water with 15 dueling pairs. The duelist plays the roles of either historical or newly invented figures. The tournament lasts for approx. 90 minutes. Large viewer platforms are arranged along the banks of the Danube during the event.

On the morning of the "Fischerstechen" a large parade takes place on the streets of the old part of the town. The parade consists of the competitors of the "Fischerstechen", fishermen and girls wearing historical costumes, riders, bands, flag throwers and dance groups. The procession lasts about 2.5 to 3 hours. During this time, the traditional dances of the Fishermen's Guild are shown several times at different places.

Telefon 0731 161-28 30  
**[www.tourismus.ulm.de](http://www.tourismus.ulm.de)**

Fishermen's Jousting: Exciting tournament on the Danube



## Schwörwoche (Oath Week)

20<sup>th</sup>–22<sup>nd</sup> July 2013

19<sup>th</sup>–21<sup>st</sup> July 2014

### Serenade of Lights

On the third Saturday in July, with the beginning of darkness, the Danube will turn into a fantastic river of lights and music. Thousands of candles swim down the river – a romantic scenery. Splendid columns of water illuminate the Danube at different intervals and announce the near Oath Monday.

### Schwör Open Air

The big concert on the Sunday evening before Oath Monday is a regular gathering point for big stars from the music scene: The Who, Simply Red and Pink have all performed here as well as Montserrat Caballe.

### Oath Monday with Nabada

In the afternoon of Oath Monday several 10,000 people gather on the banks of the river Danube from the Fishermen's Quarter down to Friedrichsau Park and admire the merry and colorful water parade "Nabada". Numerous swimmers, canoeists and boatsmen, and in addition more than 30 funnily decorated ships and ferries float down the river and charm the spectators. After the hilarious

procession on water, Oath Monday finds its end with celebrations and live music at different places, beer-gardens etc. in the city and in the Friedrichsau Park.

## Ulm Wine Festival

15<sup>th</sup> August–01<sup>st</sup> September 2013

14<sup>th</sup>–31<sup>st</sup> August 2014 (approx)

The Ulm Wine Festival has established itself as a convivial and entertaining event. At the southern corner of the Münsterplatz in the centre of Ulm, it will attract many visitors in 2013 – this year for the seventh time. More than 70 different wines and typical dishes promise diverse and delicious treats.

Phone 0731 161-28 30

[www.ulmcity-ev.de](http://www.ulmcity-ev.de)

## Einstein-Marathon

28<sup>th</sup>+29<sup>th</sup> September 2013

20<sup>th</sup>+21<sup>st</sup> September 2014 (approx)

Now in its ninth year, the Einstein-Marathon will attract more than three thousand runners from Germany and other countries to run the 42.195 km distance. Those not quite in such good shape can try the half-marathon, the shorter city run or a leisurely run for beginners. For children and teens there are also special races.

SUN Sportmanagement

Ulm/Neu-Ulm

Phone 88 01 50 30

[www.einstein-marathon.de](http://www.einstein-marathon.de)



Weekend full of events:  
Einstein-Marathon  
and Night of Culture





For more details please go to  
**[www.tourismus.ulm.de](http://www.tourismus.ulm.de)**

## Ulm/Neu-Ulm Night of Culture

14<sup>th</sup> September 2013

20<sup>th</sup> September 2014

After its beginnings thirteen years ago as a local cultural event this special night has developed into more than just a regional spectacle. Several thousands of visitors from Ulm/Neu-Ulm and surroundings meet in both cities on the Danube to enjoy the rich and varied cultural programme at museums, theatres, cafés and bars, galleries and on public squares till late at night. One remarkable extra is the free ride on all means of public transport! Experience for yourself what you have so far only heard of from other enthusiastic fans!

Tourist Information Ulm/Neu-Ulm

Phone 0731 161-28 30

**[www.tourismus.ulm.de](http://www.tourismus.ulm.de)**

**[www.kultur-in-ulm.de](http://www.kultur-in-ulm.de)**

## Regular Concerts

### Organ Concerts at the Minster

May–September,

Tue–Sat, 12–12.30 a.m.

(Sun 11.30–12.30 a.m.)

### Spiritual Evening Music at the Minster

April–November,

Sat 7 p.m. (every 2 weeks).

### Open Air Concert with Brass Band Music in the Market Place

May–September, Sun 11 a.m.

### Concerts at the Neu-Ulm Glacis Park

May–August.

## Christmas Market

25<sup>th</sup> November–22<sup>nd</sup> December 2013

24<sup>th</sup> November–22<sup>nd</sup> December 2014

Bright light gloss, the smell of mulled wine and freshly roasted almonds, contemplative trombone sounds, a friendly get together: it's Christmas Market in Ulm. Like the last years the fair will attract more than one million people from all over the world – and these visitors won't be disappointed. Directly in front of the world highest church spire over 100 festively decorated wooden stalls build a "little town within the city of Ulm". Arts and crafts articles, toys for the young and old, glass manufacture performances – to name just a few things – will guarantee unforgettable hours. A rich selection of seasonal and regional meals is also given. Not to forget the roundabouts for the children and the sheep pen with live animals. The shopping areas in Ulm and Neu-Ulm are illuminated idyllically, which gets you in the mood to stroll around. Just take your time to enjoy one of the organ concerts at the Minster or in the churches and concert halls – it will be worth it!

Tourist Information Ulm/Neu-Ulm

Phone 0731 161-28 30

**[www.tourismus.ulm.de](http://www.tourismus.ulm.de)**

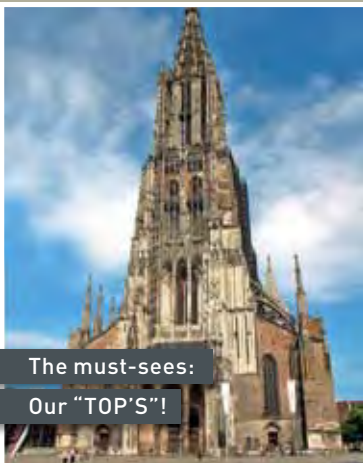
**[www.ulmer-weihnachtsmarkt.de](http://www.ulmer-weihnachtsmarkt.de)**

**"... great atmosphere."**

**"Amazing and definitely worth a visit."**

**"romantic christmas market ..."**

(Visitors about Ulm Christmas Market)



The must-sees:

Our "TOP'S"!

## 1 Ulm Minster

You won't find the tallest church spire in the world in Cologne or Barcelona, but here in Ulm. It is 161.53 m high and whoever climbs the 768 steps up to 143 m is rewarded with a glorious panoramic view. The inside of the church is also extremely interesting, as the numerous late Gothic masterpieces are real eye catchers.

From May to September, services take place at 11 a.m. The organ music starts at 12 a.m. Tue–Sat and at 11.30 a.m. on Sundays.

Open: Nov.–Feb. 9 a.m.–4.45 p.m.\*  
March, October 9 a.m.–5.45 p.m.\*  
April–June, Sept 9 a.m.–6.45 p.m.\*  
July–August 9 a.m.–7.45 p.m.\*  
\* Ascent to the tower ends 1 h earlier

Entrance: Ascent to the tower:  
Adults € 4, pupils € 2.50, family ticket € 10, organ concerts at midday € 3.50 p.p., reduced € 3, Organ recitals on Sundays € 6, reduced admission € 3  
Guided tour: bookable at the Tourist Office (after prior appointment). During divine services and organ concerts (12–12.30 a.m., Sun 11.30–12.30 a.m.) no guided tours.

**TIP** With the UlmCard reduced entrance!

## 2 Ulm Town Hall

The opulent painted town hall was built in 1370 as business premises. Later it was mentioned as town hall for the first time in 1419. The decorated astronomer's clock was installed in 1520. Inside a replica of the "Tailor of Ulm's" flying machine can be admired in the stairwell.

Open: during regular opening hours of the town hall.

Entrance: free.



## 3 Fishermen's Quarter

Idyllically situated on the mouth of the rivers Blau and Danube, the Fishermen's Quarter is the most important old part of town. The romantic and narrow alleyways, picturesque houses, bridges and squares give an impression of medieval times.

Nowadays inns and restaurants, galleries and small shops have been established here.

**TIP** Experience the Fishermen's and Tanners' Quarter with a guided evening stroll (see p. 4).



#### 4 Ulm's New Centre

What has been separated by a four lane freeway is now reconnected: the old town at the banks of the Danube and the area north of the Minster are acting again as one entity. The visitors are inspired by the particular and modern architecture. Stephan Braunfels and Wolfram Wöhr, two important German architects, created three exceptional buildings: the large store "Münstertor", an administration building of the savings bank and the new Weishaupt Gallery (see p. 17)

#### 5 City Wall Promenade with Butcher's Tower

The city wall was built in 1480 "amid the swirling waters of the Danube" as a protection against enemy troops. The city wall of today is a popular promenade way which leads along the Danube and the Fishermen's Quarter past the legend-telling Metzgerturn (Butchers' Tower) down to the Friedrichsau Park.

#### 6 The Wiblingen Monastery

The Wiblingen Monastery was founded in 1092 by Benedictine monks. Points of interest are the late Baroque basilica and the Rococo library room with glorious fresco ceilings. There is also a museum in the convent building. The monastery is also a starting point of the Upper-Swabian Baroque Route.

April–October: Tue–Sun,  
public holidays 10 a.m.–5 p.m.  
November–March: Sat, Sun,  
public holidays 1 p.m.–4 p.m.

Closed 24<sup>th</sup>, 25<sup>th</sup>, 31<sup>st</sup> December and 1<sup>st</sup> January.

Library and museum:

Adults € 4.50, with reduction € 2.30  
family card € 11.30

Basilica free entrance.

Guided visits: by appointment,  
phone 0731 502 89 75

#### 7 Zeughaus (arsenal) and Einstein Fountain

One of the most spacious building complexes of the former imperial city is the Zeughaus (arsenal). Between 1522–1667 the complex became so large that even today after the heavy destructions in 1945 the remnants are able to show the former size. In front of the Zeughaus the Einstein Fountain reminds of Ulm's most famous son.

#### 8 "Auf dem Kreuz" Quarter

At the northern edge of the old town is the quiet quarter of 'Auf dem Kreuz' (On the Cross). As well as the Griesbad-Michel Fountain, the Sebastian's Chapel, the Zundeltor (a city gate) and the Seelturm (Soul Tower), here you will find the "Graben" (moat) houses, built along the old city wall. These were used to house enlisted soldiers in the days of the free city of Ulm.





## 9 Ulm Federal Fortifications

The largest preserved fortifications in Germany were built from 1842–1859 to protect from attacks by France. Today many towers, structures and bastions can be seen throughout both cities. The Förderkreis Bundesfestung Ulm e. V. (Society for the Preservation of the Ulm Federal Fortifications) works to maintain this cultural landmark and conducts tours of various sites (including the restored Fort Oberer Kuhberg).

The federal fortification in Ulm was the central defensive fortification in southern Germany of the German Confederation. There is a fortification trail to walk along and experience the main wall. This trail connects on approx. 12.5 km the single, still maintained buildings of the fortification circle. The signposted track informs with the help of 32 panels about the striking monuments. [www.festung-ulm.de](http://www.festung-ulm.de)

## 10 Glacis Park with Water Tower, Neu-Ulm

Neu-Ulm's City Park is dominated by the impressive walls of the former federal fortification as well as by the city's distinctive landmark, the Water Tower. A children's playground, interesting waterworks, beergardens and a concert platform create a relaxed park and leisure atmosphere. Information at the Tourist Information and [www.neu-ulm.de](http://www.neu-ulm.de).



Visit one of the many concerts in the park.



## 11 Schwörhaus (Oath House)

In 1612 on Weinhof Square the representative building of the "Schwörhaus" was built in succession to the small "Schwörhäuslein", which was connected with a former watchtower. After having been (partially) destroyed twice (in 1785 and 1944) and reconstructed, the round bowed loggia on the first floor still serves the mayor as a location for his yearly oath "to be a common man to rich and poor in all equal, joint and honest matters without any prejudice, as God may help me". After the modification in 2007, the building is today the "Haus der Stadtgeschichte" (House of the history of Ulm) presenting an interesting exhibition. [www.tourismus.ulm.de](http://www.tourismus.ulm.de)



You can pick up the **brochure "Fortification trail"** for free in the Tourist Information (Stadthaus)

## 12 St John the Baptist Church

This church is one of the few examples of expressionistic sacral architecture in Germany. Constructed in 1860 in neo-romanesque style, St. John the Baptist Church got its look of today in 1922/23 and – due to destructions – after the last war through further enlargements by Dominikus Böhm. The interior is dominated by a bow construction, which reminds of gothic vaults, flowing together in the middle to a rhombic fence pattern. The expressionistic light and space dynamic in the side chapels is especially impressive.

[www.st-johann-neu-ulm.de](http://www.st-johann-neu-ulm.de)

## 13 Adlerbastei (Eagles' Bastion)

From here Albrecht Ludwig Berblinger from Ulm undertook his flight attempt over the Danube river on 31<sup>st</sup> May 1811. Unfortunately he didn't succeed because of the missing thermal upheaval over the Danube and so the so-called "Ulm Tailor" fell into the water like a stone. Later attempts (also at the same place) proved that the flying machine was able to fly indeed. Nowadays a bronze plate in the ground close to the starting place reminds of the history of this inventor from Ulm, who also developed an artificial "foot machine" (leg prosthesis).



## 14 Ulm Municipal Library

In May 2004 it was officially opened for its users and visitors: Ulm's new municipal library. Located in close

vicinity to the historic town hall on Market Square, this building with its roof in pyramidal shape covers a ground space of 28 x 28 m and is imposing with its height of more than 36 m. The most outstanding feature of this new building, however, is its surface consisting of glass on more than 4.995 m<sup>2</sup>. The famous architect of this building is Gottfried Böhm, Cologne, whose father mainly designed St. John the Baptist Church in Neu-Ulm in the beginning and middle of the last century.

[www.tourismus.ulm.de](http://www.tourismus.ulm.de)



Andreas F. Borchert

## 15 Green Courtyard

### Holy Trinity Church

Choir stalls of former monastery (1321). Nave from Martin Banzenmacher (1617–1621). Burned out in 1944. Since 1984 "Haus der Begegnung". Fountain with Petrus figure in front of church.

### Steinhaus and St. Nicholas Chapel

Romanic (13<sup>th</sup> century), oldest building in town, gothic frescoes.

### Ochsenhäuser Hof

Former monastery courtyard with a columned hall in the upper floor.

### Reichenauer Hof

Also called "Ehinger courtyard". Built in 1535 by Ulrich Ehinger. Emperor Karl V. stayed there several times. In the eastern part, vaulted hall of 1370 with frescoes cycle. In the inner court: open air theatre in July and August. Rosery at the city wall.



### 16 Söflingen Cloister Courtyard

To the west of Ulm is the suburb of Söflingen, at the heart of which is the cloister courtyard. Today only the old rectory, the former confessionary and the Church of St. Maria Himmelfahrt are still there. The buildings around the cloister courtyard, the former brewery and the old cloister mill retain their baroque style.

### 17 Synagogue

67 years after the end of Nazi rule, Ulm has a synagogue once more. Officially opened at the end of 2012, it is located directly on the Weinhof,

opposite Ulm's House of History and very close to the location of the original synagogue which was destroyed in November 1938.

### 18 St Paul's Church

The two distinctive towers of St Paul's church, built in 1910, can be seen for miles around. To the north of the old cemetery, in the eastern part of town, St Paul's church was the first reinforced concrete church in Germany.

It is full of Art Nouveau elements and new trends of reformist architecture. Thanks to its excellent acoustics, the church – which can accommodate up to 1500 people – is regarded as a unique concert venue.

### 19 St George's Church

To the south of the old cemetery is St George's church, built in 1904. The catholic church, which was formerly a garrison church, was designed in the late Gothic style.

The interior is dominated by the spacious central nave with colourful paintings and late Gothic examples of recreated altar figures.





Quite impressive:

A variety of art, culture and nature

## 20 Weishaupt Gallery

It is the new highlight in Ulm's New Centre: the Weishaupt Gallery completed in 2007. The private collection of Siegfried Weishaupt shows modern art from 1945 in apt surrounding. It includes famous works of e.g. Keith Haring, Roy Lichtenstein, Mark Rothko, Josef Albers and Nam June Paik.

The Weishaupt Gallery and the Ulm Museum are connected via a bridge.

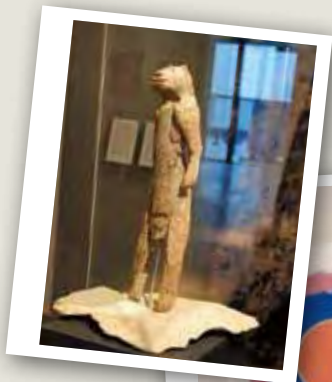
Tue–Sun 11 a.m.–5 p.m.,  
Thu 11 a.m.–8 p.m.  
Entrance: Adults € 6, pupils € 4,  
family ticket € 11.  
Free of charge for children under  
14 years and welfare recipients.  
Combined price with Ulm Museum:  
Adults € 10, pupils € 7.50  
family ticket € 18

Hans-und-Sophie-Scholl-Platz 1,  
Ulm  
Phone 0731 161-43 07 or -43 61  
[www.kunsthalle-weishaupt.de](http://www.kunsthalle-weishaupt.de)

## 21 Ulm Museum

Just 39 cm high, but still the big star of the museum's archaeological collection: the lion-headed figurine. The 32,000 year old statuette is the oldest known human/animal shaped sculpture in the world. The museum also has a significant collection of art and craftwork dating from the Middle Ages, with excellent examples of sculptures from the Ulm late Gothic period by Hans Multscher, Michel and Gregor Erhart and others.

→



**With UlmCard free entrance  
to many museums**

In the new building European and American Art from the years after 1945 with donation of the Kurt Fried Collection. Alternating exhibitions of classical and modern art.

Tue–Sun 11 a.m. – 5 p.m.,  
Thu 11 a.m. – 8 p.m.  
(special exhibitions).  
Adults € 5, pupils € 3.50  
family ticket € 8

Combined price with Weishaupt  
Gallery: Adults € 10, pupils € 7,50  
family ticket € 18

Marktplatz 9, Ulm  
Phone 0731 161-43 30  
[www.museum.ulm.de](http://www.museum.ulm.de)

---

## 22 Museum of Bread Culture

Permanent exhibition about the history of grain, baking, milling and bread culture. Information about the meaning of bread in the past and presence. Documentation on "hunger". Archive and library. Alternating art exhibition. Precious pieces of art (Breughel, Kollwitz, Picasso) concerning harvest, bread and hunger.

Open: daily 10 a.m. – 5 p.m.  
Adults € 4, pupils, pensioners  
€ 3, family ticket € 10

Salzstadelgasse 10, Ulm  
Phone 0731 699 55  
[www.museum-brotkultur.de](http://www.museum-brotkultur.de)



---

## 23 Danube Swabian Museum

The exhibition follows the varied history of the Danube Swabians. It tells about everyday life in villages and cities, about agriculture and industrial work, about coexistence in the multi-racial region of Southeast Europe, and it describes escape and expulsion after World War II.

Tue–Sun 11 a.m. – 5 p.m.  
Adults € 3.50, reduced € 2.50,  
family ticket € 5.

Obere Donaubastion, Ulm  
Phone 0731 96 25 40  
[www.dzm-museum.de](http://www.dzm-museum.de)



---

## 24 Edwin Scharff Museum with Children's Museum

Edwin Scharff was one of most important German sculptors in the first part of the 20<sup>th</sup> century. The museum appreciates his work and offers a view to the artwork of the artist. Paintings, drawings, water colours and especially his sculptures show his way from the beginning to his late work. Special exhibitions complete the art show. The children's museum invites round to participate, touch and understand.

Tue, Wed 1 p.m. – 5 p.m., Thu, Fri, Sat  
1 p.m. – 6 p.m., Sun 10 a.m. – 6 p.m.,  
closed on Monday.  
Adults € 5, with reduction € 4, family  
ticket € 9, teenager 15–18 years  
old € 1, children under 14 free.

Petrusplatz 4, Neu-Ulm  
Phone 0731 972 61 80  
[www.edwinscharffmuseum.de](http://www.edwinscharffmuseum.de)



**TIP** The UlmCard offers free admission to: Ulm Museum, Art Gallery Weishaupt, Naturkundliches Bildungszentrum (Education Centre for Natural History), Museum der Brotkultur (Museum of Bread Culture), Museum im Konventbau (Museum in the Convent Building), Monastery Wiblingen, Edwin Scharff Museum and Donauschwäbisches Zentralmuseum (Danube Swabian Central Museum)

## 25 Wiblingen Monastery Convent Museum

The new museum exhibition guides the views to the secular aspects of the monastery's history. It is specialised on the development of Wiblingen's territorial possessions, the monasterial criminal law, the status of the farmers and their agriculture.

1<sup>st</sup> April – 31<sup>st</sup> October:

Tue – Sun/holidays 10 a.m. – 5 p.m.

1<sup>st</sup> November – 31<sup>st</sup> March:

Sat, Sun/holidays 1 – 4 p.m.

Closed 24<sup>th</sup>, 25<sup>th</sup>, 31<sup>st</sup> December and 1<sup>st</sup> January.

Basilika St. Martin: 9 a.m. – 6 p.m., winter 9 a.m. – 5 p.m.

Library and museum:

Adults € 4.50, with reduction € 2.30  
family ticket € 11.30

Schloßstraße 38, Ulm

Phone 0731 502 89 75

[www.kloster-wiblingen.de](http://www.kloster-wiblingen.de)

## Geschichte und Kultur der Donauschwaben, modern präsentiert



# DZM

Donauschwäbisches Zentralmuseum Ulm

Geöffnet: Di – So 11–17 Uhr

Schillerstraße 1, D-89077 Ulm

Telefon: 0049 (0)731/96254-0

E-Mail: [info@dzm-museum.de](mailto:info@dzm-museum.de)

Internet: [www.dzm-museum.de](http://www.dzm-museum.de)





## 26 Natural History Education Center

The lively museum with scientific collections of the history of earth and the flora and fauna. The multisensorial exhibition to themes of geology, mineralogy, the Paleolithic Age, botanic and zoology gives loving and respectable appreciation of nature.

Tue–Fri 10 a.m.–4 p.m., Sat, Sun 11 a.m.–5 p.m., closed on Monday and in August.

Adults € 2.40, pupils, pensioners € 1.50, children up to 6 years free, family ticket € 4.50

Kornhausgasse 3, Ulm  
Phone 0731 161-47 42

[www.naturkunde-museum.ulm.de](http://www.naturkunde-museum.ulm.de)

## 27 Local History Museum (Oath House)

The local history museum is located near Ulm's New Centre. The most important events and subjects of the history of Ulm are presented in the historic vaulted hall of the Oath House. The exhibition shows images and objects, partly in an audiovisual way.

Open: Tue–Sat 11 a.m.–5 p.m.  
Entrance: free.

Weinhof 12, Ulm  
Phone 0731 161 42 00, 42 05  
Info: Tourist Information Ulm/  
Neu-Ulm  
0731 161-28 30  
[www.tourismus.ulm.de](http://www.tourismus.ulm.de)

Smart inhabitant:  
letter from A. Einstein

## 28 Stadthaus Ulm (Town House)

The Stadthaus Ulm, which was created by the New York star architect Richard Meier, is an open house for art, culture and people. Finished in 1993 the Stadthaus lodges changing exhibitions of contemporary art and the archaeology and history of the Minster Square.

Mon–Sat 10 a.m.–6 p.m. (Thu–8 p.m.),  
Sun/holidays 11 a.m.–6 p.m.,  
closed 24<sup>th</sup> and 25<sup>th</sup> December.  
Entrance: free.

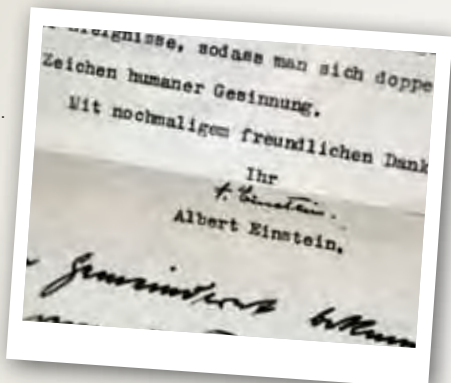
Münsterplatz, Ulm  
Phone 0731 161-77 00  
[www.stadthaus.ulm.de](http://www.stadthaus.ulm.de)

## 29 Walther Collection

The Walther Collection is an international private collection concentrating on contemporary photography and video art. On around 1000 square metres, it consists of work mostly by artists from Africa and Asia and modern photography from Europe and the USA.

Thu–Sun 11 a.m.–5 p.m.  
Visit only possible with a guided tour and prior registration.

Reichenauerstr. 21, Neu-Ulm  
Phone 0731 176 91 43  
[www.walthercollection.com](http://www.walthercollection.com)





### 30 Fort Oberer Kuhberg, Former concentration camp

From 1933–1935, the Nazi-Regime had a concentration camp for political opponents in the fortress “Oberer Kuhberg”, built in 1850. Nowadays it is a memorial with an exhibition about the prisoners, resistance and persecution which was redesigned in 2001.

1<sup>st</sup> February–30<sup>th</sup> November:  
Sun 2–5 p.m., guided visit 2.30 p.m.  
Adults € 2, with reduction € 0.50

Am Hochsträss 1, Ulm  
Phone 0731 213 12  
[www.dzok-ulm.de](http://www.dzok-ulm.de)



Walther Collection

### 31 Ulm Art Association

Contemporary art in unique historic surroundings: in the 300 m<sup>2</sup> patricians and merchants hall of Ulm, formally used for banqueting, dancing and fencing, with its original 16<sup>th</sup> century carved wooden columns, the Ulm Art Association presents six first-rate exhibitions of contemporary art annually: the spectrum ranges from painting and photography to installations and new media.

Tue–Fri 2 p.m. – 6 p.m.,  
Sat, Sun 11 a.m. – 5 p.m.,  
closed on Monday.  
Entrance: free.

Kramgasse 4, Ulm  
Phone 0731 662 58  
[www.kunstverein-ulm.de](http://www.kunstverein-ulm.de)



Smart invention: Stool from the Ulm College of Design

### 32 HfG-Archiv

In the years 1953 up to 1968, the work of the well-known Ulm College of Design was typical of the design in the fifties and sixties and also until today. A choice of the collection is a permanent exhibition in the Ulm Museum. Since November 2011 further exhibits have been shown in the new premises of the archive located in the building of the former University of Design.

Am Hochsträß 8, Ulm  
Phone 0731 161-43 70  
[www.hfg-archiv.ulm.de](http://www.hfg-archiv.ulm.de)

### 33 Ulm Memorial Exhibition “Weiße Rose” (White Rose)

Permanent exhibition on the youth resistance movement in Ulm (including siblings Hans and Sophie Scholl) during the Nazi period. You can find photo documentation about Albert Einstein on the first floor.

Mon–Fri 8 a.m. – 10 p.m. (closed during summer and Christmas holidays), Sat 8 a.m. – 3 p.m.  
Entrance: free.

Kornhausplatz 5 (vh Ulm), Ulm  
Phone 0731 15 30 11  
[www.vh-ulm.de](http://www.vh-ulm.de)

## Other Museums

### Heimatmuseum Pfuhl (Pfuhl Museum of Local History)

(in the old Rathaus (Town Hall))  
Living and working around the turn of the century: the museum shows a cobbler's workshop, an old classroom, sports equipment and toys and clothes from the past, as well as models of agricultural machinery. Sun 2–5 p.m. and by appointment  
Entrance: free.

Hauptstraße 73, Neu-Ulm  
Phone 0731 71 10 19 50

### Museum Söflingen

Permanant exhibition of the history of Söflingen. History of the Clarissen Monastery, craft and industry settlement, life and living. Interesting information about the variety, use and symbolism of bells.

Open during changing exhibitions Sun/holidays 2–5 p.m. Entrance: free.  
Klosterhof 18, Ulm  
Phone 0731 38 12 35



### Water Museum Ulm

In the "Seelhaus-Brunnenwerk" the history of the Ulm water supply is documented. In 1998 the documentation was newly furnished.

Open: only by prior appointment.  
Griesbadgasse 30, Ulm  
Phone 0731 166 49 00

### Art paths in Ulm/Neu-Ulm

3 art paths in Ulm/Neu-Ulm offer open-air-art in a remarkable way: the "Art path of the University of Ulm" with more than 60 sculptures, the "Art landscape Danube" with more than 45 sculptures and the "Art path Sculptura".

Info: Tourist Information Ulm/Neu-Ulm  
Phone 0731 161-28 30  
[www.tourismus.ulm.de](http://www.tourismus.ulm.de)



### Artfully

Get a comprehensive booklet on the museums located in the twin cities on the Danube free of charge at the tourist information (town hall) or download at [www.tourismus.ulm.de](http://www.tourismus.ulm.de)



Nana sculpture by Niki de Saint Phalle on the Open Air Art Route at the University of Ulm

KLOSTER WIBLINGEN

# ORT ZWISCHEN HIMMEL UND ERDE!



## BIBLIOTHEKSSAAL – MUSEUM IM KONVENTBAU

### **ÖFFNUNGSZEITEN:**

*Di bis So und an*

*Feiertagen 10-17 Uhr*

### **INFORMATIONEN:**

*Klosterverwaltung Wiblingen*

*Schlossstraße 38, 89079 Ulm*

*Telefon +49 (0) 7 31 . 50-2 89 75*

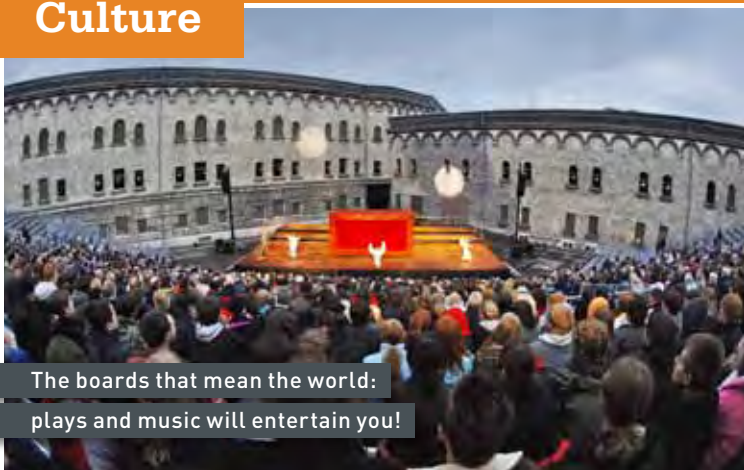
*info@kloster-wiblingen.de*

*www.kloster-wiblingen.de*



Baden-Württemberg





The boards that mean the world:  
plays and music will entertain you!

## 34 Ulm Theatre

The Ulm Theatre is the cultural centre of Ulm and comprises three genres at a high artistic level. The "Großes Haus" has an auditorium seating 815 people, where as the "Podium" has up to 200 seats. By the way, Herbert von Karajan started his career here in this theatre.

Advance booking: Tue – Fri  
11 a.m. – 7 p.m., Sat 10 a.m. – 1 p.m.  
starting 4 weeks before first  
performance. Concessions possible.

Herbert-von-Karajan-Platz 1, Ulm  
Phone 0731 161-44 44  
[www.theater.ulm.de](http://www.theater.ulm.de)

## 35 Theatre Neu-Ulm

Neu-Ulm's theatre is a private professional stage. On the play-list are mainly amusing and entertaining comedies – there will be certainly a lot to laugh at.

Evening ticket office from 6.30 p.m.  
Theaterplatz, Hermann-Köhl-Str. 3,  
Neu-Ulm  
Phone 0731 55 34 12  
[www.theater-neu-ulm.de](http://www.theater-neu-ulm.de)

## 36 Theater in der Westentasche

The smallest theatre in Germany. Traditional, modern and international plays. They perform the whole year-round. From May until September they offer open-air theatre at different locations throughout the city like Friedrichsau Park or at the Green Courtyard (Grüner Hof).

Phone 0731 814 45

For more information on seasons and available seats please go to  
[www.westentasche.de](http://www.westentasche.de)



**TIP** Reduced entrance with the  
UlmCard: Ulm Theatre,  
Theatre Neu-Ulm!

## 37 Roxy

Culture vultures find in the extraordinary ambiance of the former factory building a wide spectrum of events: Music, comedy, cabaret but as well literature, dance and theatre. National and international acts find their place just as local newcomers and small drama groups.

Seasons: different times depending on the concerts.

Schillerstraße 1, Ulm

Phone 0731 96 86 20

[www.roxy.ulm.de](http://www.roxy.ulm.de)



## 38 ratiopharm arena

The ratiopharm arena in Neu-Ulm offers more than 6700 seats – enough space for spectators wishing to experience great live events. On the one hand the arena is the home to the ratiopharm Ulm Bundesliga Basketball Team, on the other hand the hall is used for concerts like Chris de Burgh, shows and other sporting and cultural events.

Phone 0731 20 64 10

[www.ratiopharmarena.de](http://www.ratiopharmarena.de)

## Other stages

### Theaterei Herrlingen

Since 1986 the "Theaterei" is a steady and popular component of the cultural scene around Ulm. Theaterei is a truly charming place reminding of a living room theatre. It performs at the Theaterei tent in the town centre of Blaustein/Ehrenstein from May to October during summer season.

Info: Oberherrlinger Str. 22,  
89134 Blaustein-Herrlingen  
Phone 0731 26 81 77

[www.theaterei.de](http://www.theaterei.de)

### theaterWerkstatt Ulm

A fine small theatre in a lively arts centre. Shows critical works from Brecht to Turrini. Also poetry and song evenings and comic sketches, for example by Lorient or Karl Valentin. 50 seats. Seasons: all year round Friday and Saturday.

Schillerstraße 1, Ulm

Phone 0731 61 87 88

or 07348 98 21 80

[www.theaterwerkstatt-ulm-ev](http://www.theaterwerkstatt-ulm-ev)

### KCC Restaurant-theatre

KCC – these three letters stand for "fight against the cerebral cellulitis". But it is a café, a theatre, a dance hall, a literature café or a restaurant. Be that as it may, it is everything for everybody.

Seasons: September– July.

Pfarrer-Weiß-Weg 16–18, Ulm

Phone 0731 387 07 67

[www.kcctheater.de](http://www.kcctheater.de)

### Academy of Dramatic Art Ulm

The Academy of Dramatic Art Ulm is part of the academy of the acting arts. In every season up to 20 new productions will be created.

The visitor gets to see a lively and unusual theatre, sometimes with the charm of improvisation.

Seasons: twelve-month season.

Fort Unterer Kuhberg 12, Ulm

Phone 0731 38 75 31

[www.adk-ulm.de](http://www.adk-ulm.de)

## Advance Booking

### Neu-Ulmer Zeitung

Phone 0731 70 71 44, Fax 0731 70 71 72

### traffiti

Phone 0731 96 70 70, Fax 0731 166 21 29

### Südwest Presse

Phone 0731 156-855

### Schwäbische Zeitung

Phone 0180 500 04 73

### Ticket Box

Phone 0731 18 33 33

**Everyone loves to be outdoors. Not without reason: you can spend your leisure time at the banks of the Danube, in the Botanical garden or in an outdoor-pool while enjoying fresh air.**

## **39 Climbing in the sparkassendome**

The new sparkassendome offers all kind of climbing adventures. The premises boast an indoor and outdoor climbing area totalling 2,900 sqm. It also offers a camping board, a climbing wall for children and top ropes.

Mo–So 9 a.m.–11 p.m.  
Adults € 15,50  
Children/adolescents € 12

Nelsonallee 17, Neu-Ulm  
Telefon 0731 60 30 75-0  
[www.sparkassendome.de](http://www.sparkassendome.de)

## **40 Zoological Garden Ulm**

The zoo in the Friedrichsau Park presents many regional and exotic animals: fishes, birds, monkeys, crocodiles, kangaroos and many more. The latest attraction is the accessible Danube aquarium with local fishes in 250,000 litres of water.

October–March: daily 10 a.m.–5 p.m.  
April–Sept.: daily 10 a.m.–6 p.m.  
(May–September, Sat, Sun/holiday 10 a.m.–7 p.m.).  
Adults € 5, Children 6–14 years € 3  
family ticket € 10

Friedrichsau 40, Ulm  
Phone 0731 161-67 42  
or 0731 880 08 93  
[www.tiergarten.ulm.de](http://www.tiergarten.ulm.de)







#### 41 Botanical garden of the University of Ulm

On an area of 70 acres (28 ha) e.g. the rose garden, an arboretum with 750 different bushes and trees, an apothecary's garden and two tropical greenhouses can be visited.

Outdoor: March–Oct. 9 a.m. – 8 p.m., November–February 9 a.m. – 4 p.m.  
Tropical greenhouses: Tue + Thu 9–12 a.m., 1–3 p.m., 1<sup>st</sup> Sun/month 2–5 p.m. (Nov–Feb 2–4 p.m.), 31.7.–11.9. every Sun 2–5 p.m.  
Entrance: free, guided tour € 2.50.

Hans-Krebs-Weg, Ulm

Phone 0731 503 13 51

[www.uni-ulm.de/einrichtungen/garten.html](http://www.uni-ulm.de/einrichtungen/garten.html)

#### 42 Donau-Ice-Dome Wonnemar (Ice Skating Ground)

The Ice Skating Ground in Neu-Ulm offers fun for the young and the old. Perfectly suited for first steps on ice or for the more experienced – you can choose between an indoor and outdoor skating ground.

Season: October until March

Further Information:

Phone 0731 94583310

Donau-Ice-Dome Wonnemar

Wiblinger Straße 55, Neu-Ulm

Phone 0731 985 99-35

[www.wonnemar.de](http://www.wonnemar.de)



#### 43 Glacis Park with Water Tower, Neu-Ulm

Neu-Ulm's City Park is dominated by the impressive walls of the former federal fortification as well as by the city's distinctive landmark, the Water Tower. A children's playground, interesting waterworks, beergardens and a concert platform create a relaxed park and leisure atmosphere.

Information at the Tourist Information and [www.neu-ulm.de](http://www.neu-ulm.de).



**Visit one of the many concerts in the park.**

#### 44 Donaubad Wonnemar

Relaxation and enjoyment in one of the largest water parks in Germany – the Donaubad Wonnemar offers high-quality fun for all the family. Take a holiday for a day and plunge into the swimming pools, sauna, thermal baths and spa.

Mon–Thu 10 a.m. – 10 p.m.,

Fri–Sun 10 a.m. – 11 p.m.

Water park and sports swimming pool from € 7.90 (adults), from € 6.90 (concessions) and from € 21.50 (families). Sauna World from € 14.50 (adults) and from € 13.50 (concessions).

Wiblinger Str. 55, Neu-Ulm

Phone 0731 98 59 90

[www.wonnemar.de](http://www.wonnemar.de)





#### 45 Bad Blau Leisure Pool

Huge outdoor pool with 33 °C with massage jets, facilities for treatments according to Kneipp, 25 m swimming pool and new fun area for children. Many attractions: 60 m water slide, sun dune. New Sauna area: panoramic sauna, blockhouse sauna and the Finnish kelo sauna, saunarium, steam bath grotto, hot stone and relaxing areas. Massages, solariums, aqua fitness. Bistro and Café.

Mon–Thu 9 a.m. – 10 p.m.,  
 Fri 9 a.m. – 11 p.m.  
 Sa, Sun, holidays 9 a.m. – 10 p.m.  
 Early swimming Wed from 7.00 a.m.  
 Day ticket pool € 8.50,  
 reduced € 7.50,  
 day ticket pool + sauna € 13.70,  
 reduced € 13.00.  
 Boschstraße 12, 89134 Blaustein  
 Phone 07304 80 21 62  
[www.badblau.de](http://www.badblau.de)

#### 46 Oldtimer fabrik Classic

The first port of call for classic car lovers: sales, exhibitions, events and fine food in a nostalgic atmosphere. Admission free.

Mon–Sat 8 a.m. – 6 p.m.,  
 Sun 10 a.m. – 6 p.m.  
 Lessingstraße 5, Neu-Ulm  
 Phone 0731 17 51 18 44  
[www.oldtimerfabrik-classic.de](http://www.oldtimerfabrik-classic.de)

#### Bicycle tour tracks

The **track Danube – Lake Constance** leads through the beautiful scenery of Upper Swabia, starting in Ulm via Bad Waldsee and Wangen and ending in Langenargen at Lake Constance. The distance of this main route runs up to 142 km.

Very popular and widely known is the **Danube bicycle tour track**. Starting on the source of the Danube the route goes along many sights from Donaueschingen via Ulm/Neu-Ulm and Regensburg to Passau (and further to Vienna and Budapest). Information is available at the Tourist Information Ulm/Neu-Ulm and at the Association German Danube in Neuburg/Donau.  
 Phone 08431 90 83 30  
[www.deutsche-donau.de](http://www.deutsche-donau.de)

Iller bicycle tour track **Ulm – Oberstdorf**. From the mouth of the river Iller to its source, the distance of the **Iller bicycle tour track** (Oberstdorf–Ulm) amounts up to 150 km. It runs from Ulm/Neu-Ulm via Illertissen, Memmingen and Kempten to Oberstdorf. More information you will get at the Tourist Information Ulm/Neu-Ulm and also at all tourist offices along the way on the river Iller.



Photo: ADFC / Marcus Gloger

# Urlaub vom Alltag ...

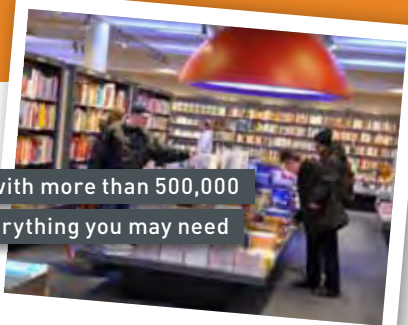


## ... in Bayerisch-Schwaben

[www.landkreis.neu-ulm-tourismus.de](http://www.landkreis.neu-ulm-tourismus.de)

# Shopping

Ulm is centre of a region with more than 500,000 inhabitants and offers everything you may need



**Fancy shoes?**

**The latest novel?**

**Delicatessen? China? Souvenirs?**

**Never fear: You will find it. In fact, most shops are reachable within walking distance. If shopping stimulates your appetite, you will be welcomed in one of the many restaurants.**

## City Centre – Shopping

[www.ulmercitiy.de](http://www.ulmercitiy.de)

[www.wir-in-neu-ulm.de](http://www.wir-in-neu-ulm.de)

Not for nothing was the Hirschstraße, the shopping street between the central station and the Minster Square, ranked under the ten most popular shopping streets in Germany. The **City centre of Ulm** is the first place to go for shopping addicts. Not only due to the beautiful view of the Minster which you will have between the different stores, but mainly because of the wide offer. In the Hirschstraße you will find all famous brands and in the little alleys around the Minster Square a lot of local retailers.

Who prefers a more quiet way of shopping will love the Fishermen's and Tanners' Quarter. The romantic old town offers long established and original retailers. A lot of goldsmiths, antique shops and galleries have found their home there.

A particularity especially for families is the **infant care** directly located in the city centre (Ulmergasse). The children are professionally supervised while the parents can enjoy a few hours on their own.

The **Blautalcenter**, located close to the city centre, is the largest shopping mall in Baden-Württemberg, with 100 shops and restaurants over 37,500 square metres – making it an interesting addition to the Ulm and Neu-Ulm city centres.

Speaking of **Neu-Ulm** – a diverse range of shops awaits the visitor around the Petrusplatz in the city centre.

**TIP**

### Shopping days

Visit Ulm on **Ulmer Münstertag** (1<sup>st</sup> June 2013) or one of the **shopping Sundays** (17<sup>th</sup> March and 6<sup>th</sup> October 2013)!

## Souvenirs, souvenirs

Are you looking for a typical souvenir?  
How about the following?

### Ulm Sparrow

The small bird as the symbol of Ulm (due to a legend) in all variations such as made of metal, china, clay, chocolate, marzipan or praliné.

### Ulmer Schachtel

A miniature copy of the typical Ulm trading ship, which was used on the Danube for carrying goods and passengers.



### Tailor of Ulm

A miniature of Ulm's flying pioneer with his hanglider for decoration or as toy for children.

### Sugar Bread of Ulm

Dry cake, like sweetbread with anise flavour.

**TIP** Typical Souvenirs from Ulm are available at the Tourist Information.



## Gastronomy

The gastronomy presents itself in the best light. From Swabian onion roast beef and the so-called "Maultaschen" (a kind of swabian ravioli) to "Weisswuerste" (Bavarian veal sausage) or cheese spaetzle (the regional answer to Italian pasta): the regional cuisine is delicious. Who prefers it more internationally, will discover that many restaurants can cater to this need as well.

Certainly because of its tradition as a fortress and garrison town since more than 150 years it is a fact that Ulm/Neu-Ulm boasts more pubs per square meter than almost any other city in Germany. It is due to the unique combination of the many beer gardens, historic and international restaurants, cafés, music bars and brewery pubs that the gastronomic scene is that diversified.

**TIP** You can pick up the current restaurant guide for free at the Tourist Information Office (see page 6/7).



# Children-fun

**Not only adults enjoy their stay in Ulm and Neu-Ulm. The twin cities on the danube offer also for the little ones a lot to discover.**

---

## **47 Erstes Ulmer Kasperletheater (Ulm's Punch and Judy Show)**

Büchsenstraße 3, Ulm  
Phone 0731 602 22 64  
[www.kasperletheaterulm.de](http://www.kasperletheaterulm.de)

---

## **48 Topolino Figurentheater (Figurine theatre)**

Gartenstraße 13, Neu-Ulm  
(Musikschule Neu-Ulm)  
Phone 0731 71 38 00  
[www.topolino-figurentheater.de](http://www.topolino-figurentheater.de)

---

## **49 kinder-theater-werkstatt Ulm (kids theatre-workshop)**

Schillerstraße 1, Ulm  
Phone 0731 61 87 88  
(Theaterkasse am Tag der Vorstellung)  
[www.kinder-theater-werkstatt.de](http://www.kinder-theater-werkstatt.de)



---

## **50 Ulmer Marionettentheater (Ulm Puppet theatre)**

Unterer Kuhberg 10, Ulm  
Phone 0731 315 06  
[www.ulmermarionettentheater.de](http://www.ulmermarionettentheater.de)

---

## **51 Junge Bühne im Alten Theater (Children theatre)**

Wagnerstraße 1, Ulm  
Phone 0731 161 47 24  
[www.juengebuhne-ulm.de](http://www.juengebuhne-ulm.de)

---

## **52 Schildkröten- und Reptilienzoo Neu-Ulm (Reptile Zoo Neu-Ulm)**

Brunnenweg 46, Neu-Ulm  
Phone 0731 985 59 90  
[www.schildkroeten-zoo.de](http://www.schildkroeten-zoo.de)

You can pick up the brochure "familienspaß" at the tourist information including many offers for the whole family.

**Ulm/Neu-Ulm is worth seeing – by everyone.  
There are special offers and brochures for disabled  
guests who wish to visit the attractions.**

---

## **City guide book for disabled persons**

The “Club of disabled people” issued a special city guide book. This book is available in a new edition at the Tourist Information in the Ulm Stadthaus. More info from the Club of disabled people by Phone 0731 233 10.

**[www.caritas-ulm.de/14869.html](http://www.caritas-ulm.de/14869.html)**

---

## **Wheel-chair hiring**

Wheel-chairs can be borrowed at the Tourist Information.

---

## **A town right at your fingertips**

A newly designed touch model made of bronze has been displayed at the Münsterplatz square since 2011, providing a true-to-scale representation of all 503 buildings situated in the city centre of Ulm.

---

## **Guided tour for blind and visually impaired people**

Specially trained city guides accompany blind and visually handicapped people through the twin cities on the Danube and explain the sights and particularities of both cities.

We provide further information concerning handicapped accessible hotels, restaurants, museums and leisure time facilities:

---

## **Tourist Information Ulm/Neu-Ulm**

Münsterplatz 50 (Stadthaus)

D-89073 Ulm

Phone 0731 161-28 30

Fax 0731 161-16 41

**[www.tourismus.ulm.de](http://www.tourismus.ulm.de)**





# Surrounding area

**There is much to see and do in Ulm/Neu-Ulm, but there are also plenty of interesting places to visit in the surrounding region – such as the Blautopf, the Swabian Alb, baroque churches ...**

## Swabian Alb

The Swabian Alb  
National Geopark

### Caves on the Swabian Alb

amongst others Hohle Fels, Laichinger Tiefenhöhle, Sontheimer Höhle and Schertelshöhle.

[www.tourismus.alb-donau-kreis.de](http://www.tourismus.alb-donau-kreis.de)

### Blaubeuren 19 km

Monastery church with late Gothic choir and famous high altar decorated with carved sculptures by Michel Erhart. Blautopf (source of the river Blau), 22 m deep. Beautiful half-timbered houses. Ruins of the castle Rusenschloss.

### Schelklingen 23 km

Cave "Hohle Fels" – Find spot of the Venus figurine.

### Giengen/Brenz 30 km

Steffi teddy bear factory with museum and outlet. Charlottenhöhle (532 m), longest stalactite cavern of the Alb.

### Laichingen 40 km

Tiefenhöhle (cave), (740 m) 80 m deep, deepest accessible cave in Germany, open Good Friday – end of October.



## Upper Swabia

### Upper Swabian Baroque Road

From Ulm to the most beautiful monasteries, churches and buildings between the Danube and Lake Constance.

### Laupheim 26 km

Planetarium

### Biberach 30 km

Historic old town, station of the German half-timbered house road, Braith-Mali-Museum, Jordan pool.

### Obermarchtal 36 km

Extensive monastery in early Baroque style, hall of mirrors.

### Ochsenhausen 45 km

Monastery in Baroque style; organ by Gabler.

### Zwiefalten 50 km

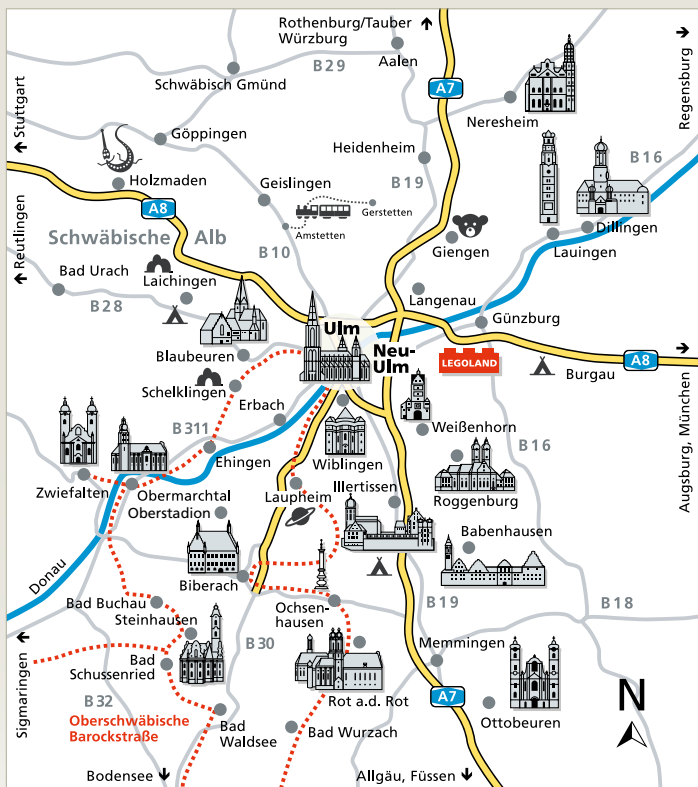
Baroque minster by J.M. Fischer (1765) with magnificent choir stalls.

### Steinhausen 52 km

Glorious example of South German Baroque, church by D. Zimmermann. Beautiful painted ceiling by J. Zimmermann.



Blautopf in Blaubeuren



## Bavarian Swabia

### Oberelchingen 8 km

Former Benedictine abbey built in 1100. In 1746 the church was redecorated in Rococo style. Napoleon's height (battle in 1805).

### Weißenhorn 22 km

Old town with medieval city wall, Fugger & Neuffen Castle, local museum, historic theatre.

### Günzburg 24 km

Liebfrauenkirche by D. Zimmermann, Reisenburg Castle, Nature reserve Donaumoos, Legoland® theme park.



### Illertissen 25 km

Bavarian Bee Museum at Vöhlin Castle.

### Roggenburg 28 km

Former imperial abbey, church in Baroque style by S. Kramer, library, gastronomy and monastery shop, museum.

# Useful information

## By road

Good motorway connections

A8: Ulm-West 9 km

A7: Nersingen 6 km

Hittistetten 12 km



For more information on the low emission zone please go to [www.tourismus.ulm.de](http://www.tourismus.ulm.de)

## By rail

ICE connection Stuttgart-München (Stuttgart 56 min. / München 85 min.)

## Airports

Airport Memmingen 60 km

Airport Stuttgart 85 km

Airport München 155 km

Airport Frankfurt/Main 285 km

## Internet-Cafés (selection)

Internet Café Saha

Frauenstraße 35, Ulm

Café Albert in the Einsteinhaus (vh)

Kornhausplatz 5, Ulm

EFE Internet Café

Gideon-Bacher-Straße 11, Ulm

## Youth Hostel

Geschwister-Scholl-Jugendherberge  
114 beds, dining-hall, common rooms, party cellar.

Grimmelfinger Weg 45, Ulm

Phone 0731 38 44 55

[www.jugendherberge-ulm.de](http://www.jugendherberge-ulm.de)

## Cinemas

Xinedome am Lederhof, Ulm

Phone 0731 140 20-20

[www.xinedome.de](http://www.xinedome.de)

Dietrich-Theater Neu-Ulm

Marlene-Dietrich-Str. 11

Phone 01805 985 55 98

[www.dietrich-theater.de](http://www.dietrich-theater.de)

Lichtburg Ulm, Frauenstr. 61

Phone 0731 654 00

Mephisto Ulm, Rosengasse 15

Phone 0731 602 12 18

Obscura Ulm

Schillerstraße 1

Phone 0731 602 28 58

## Public transport

Good bus and tram network in Ulm/Neu-Ulm. Information on prices and timetables at:

[www.ding.eu](http://www.ding.eu)

## Car parks

There are more than 4,000 parking spaces available in several car parks – including the very centrally located “Am Rathaus” car park. You can find an overview at [www.parken-in-ulm.de](http://www.parken-in-ulm.de)

## Police

Department Ulm, Münsterplatz 47

Phone 0731 18 80

Department Neu-Ulm, Reuttier Str. 64

Phone 0731 801 30

## Taxi

### Taxi company Ulm

Phone 0731 660 66

Locations: Main Station, Minster Square, Clinic Safranberg and Clinic Michelsberg, Wiblingen (Fischerhauserweg), Söflingen (terminal stop), Eselsberg, Army Clinic, Donauhalle.

### Taxi company Neu-Ulm (Donau-Taxi)

Phone 770 00, 750 00

Locations: Main Station Neu-Ulm, Augsburgener Straße/Ottostraße



## Tourist Information

Ulm/Neu-Ulm (see page 6/7)

## Camper parking lots

Approx. 50 free parking lots with supply station close to the Danube Stadium, max. duration 3 days, easy to reach the city centre with tram and bus.

Phone 0731 161-28 30

[www.tourismus.ulm.de](http://www.tourismus.ulm.de)

See the index for further topics .

# *Riskieren Sie mal einen Blick!*

Theater Ulm

Herbert-von-Karajan-Platz 1 | 89073 Ulm

Theaterkasse:

0731 / 161 4444 | theaterkasse@ulm.de

[www.theater.ulm.de](http://www.theater.ulm.de)



## Gut für die Region.



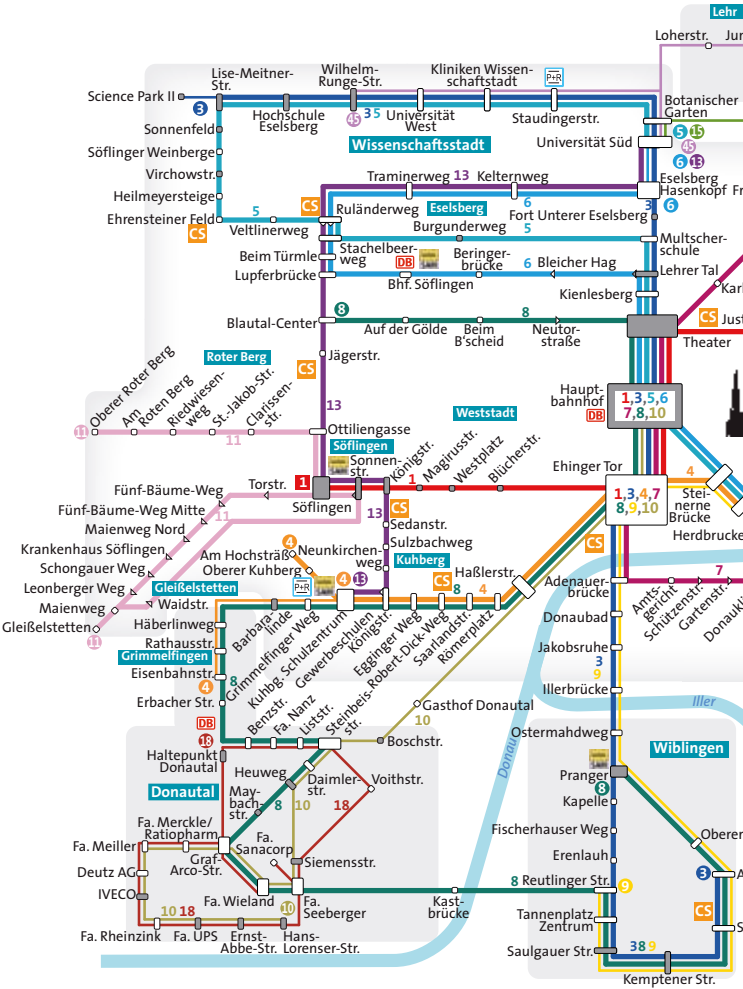
Die Sparkasse Ulm ist das führende Kreditinstitut in Ulm und im Alb-Donau-Kreis und der bevorzugte und verlässliche Partner in allen Finanzfragen. Die Verbundenheit der Sparkasse Ulm zu ihren Kunden zeigt sich in einem vielfältigen Engagement für den Wirtschaftsraum. Als Arbeitgeber wie als Ausbilder, als Förderer der regionalen Wirtschaft, als Auftraggeber, als Spender und Sponsor und nicht zuletzt als Steuerzahler: Die Sparkasse Ulm ist gut für Ulm und den Alb-Donau-Kreis.

 Sparkasse  
Ulm

# Public transport

It's easy to hop on board in Ulm/Neu-Ulm. The buses and trams will take you everywhere you want to go – even at night on the night bus (search [www.swu.de](http://www.swu.de) > “Nachtbus”). You can find all the timetables and price information at [www.ding.eu](http://www.ding.eu)

## Ulm/Neu-Ulm



TIP

With the UlmCard free use of all public transport within the city boundaries of Ulm/Neu-Ulm (see p. 7)



Photo: www.ulrichkissmann.de



DB BAHN

### Ihr City-Ticket gilt:

im Stadtgebiet Ulm/Neu-Ulm für eine einfache Fahrt

- Endhaltestelle
  - Haltestelle wird nur in Pfeilrichtung bedient
  - Niederflurhaltestelle
  - Anschluss an Eisenbahnverkehr
  - Anschluss an SWU-MobilSAM
  - Park&Ride-Platz
  - Standorte von CarSharing-Autos
- Infos: [www.confishare.de](http://www.confishare.de)

Herausgeber:  
Donau-Iller-Nahverkehrsverbund GmbH  
Grundgestaltung: Oliver Geier, 2008  
Stand 12/2011

**ding**  
Einfach besser fahren

[www.ding.eu](http://www.ding.eu)



# Index

<b>Academy of Dramatic Art</b>	25	<b>HfG</b>	21	<b>Swabian Alb</b>	34
<b>Art paths</b>	22	<b>History</b>	2	<b>Tailor of Ulm</b>	3,12,31
<b>Audio Guide</b>	5			<b>Tanners' Quarter</b>	4,12,30
<b>Auf dem Kreuz "Quarter"</b>	13	<b>Junge Bühne</b>	32	<b>Taxi</b>	36
				<b>Theater i. d.</b>	
<b>Bad Blau Leisure Pool</b>	28	<b>KCC</b>	25	<b>Westentasche</b>	24
<b>Bavarian Swabia</b>	35	<b>kinder-theater-werkstatt</b>	32	<b>Theatre Ulm</b>	24
<b>Berblinger</b>	15			<b>Theateri Herrlingen</b>	25
<b>Bicycle tour tracks</b>	28	<b>Leisure</b>	26	<b>theaterWerkstatt</b>	25
<b>Botanical Garden</b>	27	<b>Local History Museum</b>	20	<b>Theatre Neu-Ulm</b>	24
<b>Bus &amp; Train</b>	36,38			<b>The Ulm Fisherman's</b>	
<b>Butcher's Tower</b>	13	<b>Map of the Surrounding</b>	35	<b>Jousting</b>	9
		<b>Minster</b>	4,12	<b>Ticket Service</b>	25
<b>Caravans</b>	36	<b>Mobile phone</b>		<b>Topolino figurine theatre</b>	32
<b>Children-fun</b>	32	<b>travel guide</b>	5	<b>Tourist Information</b>	6
<b>Children's Museum</b>	18	<b>Municipal library</b>	15	<b>Town House</b>	20
<b>Children theatre</b>	32	<b>Museums</b>	17	<b>Oldtimer factory Classic</b>	28
<b>Christmas Market</b>	11	<b>Museum of Bread Culture</b>	18		
<b>Cinemas</b>	36	<b>Museum Söflingen</b>	22	<b>Ulm app</b>	5
<b>City Map</b>	cover			<b>Ulm Art Association</b>	21
<b>City Wall Promenade</b>	13	<b>Nabada</b>	9	<b>UlmCard</b>	7,19
<b>Cloister Courtyard</b>		<b>Natural History</b>		<b>Ulmer Schachtel</b>	31
<b>Söflingen</b>	16	<b>Education Center</b>	20	<b>Ulm Fun Fair</b>	8
<b>Concerts</b>	11	<b>New Centre</b>	13	<b>Ulm's Punch and</b>	
<b>Convent Museum</b>	19	<b>Night of Culture</b>	10	<b>Judy Show</b>	32
<b>Culture</b>	24	<b>Night-Watchman Tour</b>	5	<b>Ulm Puppet theatre</b>	32
<b>Cycling</b>	28			<b>Ulm Memorial</b>	
		<b>Oath House</b>	14,20	<b>Exhibition</b>	21
<b>Danube Swabian</b>		<b>Oath Week</b>	10	<b>Ulm Minster</b>	4,12
<b>Museum</b>	18	<b>Organ Concert</b>	4,11,12	<b>Ulm Museum</b>	17
<b>Disabled Access</b>	33			<b>Ulm Sparrow</b>	31
<b>Donaubad Wonnemar</b>	27	<b>Park Friedrichsau</b>	26	<b>Ulm Tent Festival</b>	8
		<b>Pfuhl Museum of</b>		<b>Ulm Theatre</b>	24
<b>Eagle's Bastion</b>	15	<b>local history</b>	22	<b>Ulm Town Hall</b>	12
<b>Edwin Scharff Museum</b>	18	<b>Public transport</b>	38	<b>Ulm Wine Festival</b>	10
<b>Einstein Fountain</b>	13			<b>Upper Swabia</b>	34
<b>Einstein-Marathon</b>	10	<b>ratiopharm arena</b>	25	<b>Useful Information</b>	36
<b>Evening Stroll</b>	4	<b>Reptile Zoo Neu-Ulm</b>	32		
		<b>Roxy</b>	25	<b>Walther Collection</b>	20
<b>Federal Fortifications</b>	14			<b>Water Museum Ulm</b>	22
<b>Fishermen's Quarter</b>	12	<b>Serenade of lights</b>	10	<b>Water Tower</b>	
<b>Former concentration</b>		<b>Shopping</b>	30	<b>Neu-Ulm</b>	14,27
<b>camp</b>	21	<b>Sightseeing tour</b>	5	<b>Weishaupt Gallery</b>	17
<b>Fort Oberer Kuhberg</b>	21	<b>Souvenirs</b>	6,31	<b>White Rose</b>	21
<b>Fortification Trail</b>	14	<b>Sparkassendome</b>	26	<b>Wiblingen</b>	13,19
		<b>Stadthaus Ulm</b>	20	<b>Wiblingen Monastery</b>	13,19
<b>Gastronomy</b>	31	<b>St Georg's Church</b>	16		
<b>German Championships</b>		<b>St Johann Baptist</b>	15	<b>Zeughaus (arsenal)</b>	13
<b>in Athletics</b>	8	<b>St Paul's Church</b>	16	<b>Zoological garden</b>	26
<b>Glacis Park</b>	14,27	<b>Sugar bread of Ulm</b>	31		
<b>Green Courtyard</b>	15	<b>Surrounding area</b>	34		
<b>Guided tours</b>	4	<b>Synagogue</b>	16		

## Imprint

Published by:  
Ulm/Neu-Ulm Touristik GmbH  
Neue Straße 45  
89073 Ulm

Information dated August 2012  
according to best knowledge, but  
without legal obligation. Subject to  
change. Up to date information on  
**[www.tourismus.ulm.de](http://www.tourismus.ulm.de)**

**BERTSCHE + SPIEGEL**

Kommunikation und Design



**SCHIRMER**

print • medien • lösungen

[www.schirmer-druck.de](http://www.schirmer-druck.de)

Layout: Bertsche + Spiegel, Ulm  
[www.bertsche-spiegel.de](http://www.bertsche-spiegel.de)

Printing: Schirmer Druck, Ulm  
[www.schirmer-druck.de](http://www.schirmer-druck.de)

Translation: Fay Abernethy

ulm.neu-ulm

# Rund herum

Alles  
auch online  
buchbar

... aber auch kreuz und quer, von hüben nach drüben und zurück führen wir Sie durch Ulm und Neu-Ulm. Kurzweilig, informativ und oft auch mit einem besonderen Augenzwinkern zeigen wir Ihnen bei unseren vielen Stadt- und Erlebnisführungen die schönsten Seiten der beiden Städte.

Und für bleibende Erinnerungen an die Donau-Doppelstadt sorgen unsere tollen Souvenirs, die wir Ihnen in unserer Tourist-Information präsentieren.

**Tourist-Information Ulm/Neu-Ulm**  
**Münsterplatz50 (Stadthaus) · 89073 Ulm**  
**Telefon 0731 161-2830**



[www.tourismus.ulm.de](http://www.tourismus.ulm.de)

# City map

The numbers in the map refer to the sight

41 Botanical Garden (ca. 2 km)

45 Blaubein (ca. 7 km)

Cloister Courtyard (ca. 2,5 km)

16 Ehinger Straße

Kuhberg (ca. 3 km)

50  
32  
30



42 44

6 25 Wiblingen (ca. 3 km)

The map displays the city of Neu-Ulm, Germany, with a focus on its urban layout and landmarks. Major roads like the Donaustraße and Augsburger Straße are highlighted in yellow. The Danube River (Donau) flows through the city, with several bridges crossing it. Key landmarks include the Ulmer Museum, Rathaus, and various churches. The map also shows the city's proximity to Friedrichshafen and Biberach. The map is color-coded with yellow for main roads, grey for residential streets, and green for parks. Key landmarks include the Ulmer Museum, Rathaus, and various churches. The map also shows the city's proximity to Friedrichshafen and Biberach.

Walther Collection, Burlafingen (ca. 5 km)

## Größer. Tiefer. Älter. Bei uns finden Sie alle Superlative!

Karstquelle Blautopf Blaubeuren



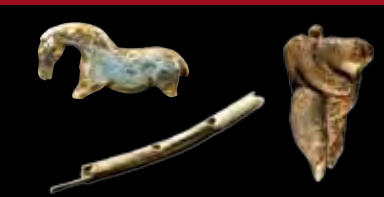
Die schönste Karstquelle Deutschlands mit dem größten Höhlensystem der Schwäbischen Alb.

Tiefenhöhle Laichingen



Reise ins Innere der Erde.  
Die tiefste Schauhöhle Deutschlands  
(55 m tief).

Urgeschichtliches Museum Blaubeuren



Die älteste Kunst.  
Elfenbeinschnitzereien aus den  
Steinzeithöhlen der Alb, bis zu  
40.000 Jahre alt.



**Broschüre „höhlenreich“ bestellen!**

Alb-Donau-Kreis Tourismus  
Schillerstraße 30 · 89077 Ulm  
Telefon 0731/185-1238  
[www.tourismus.alb-donau-kreis.de](http://www.tourismus.alb-donau-kreis.de)  
[wirtschaft@alb-donau-kreis.de](mailto:wirtschaft@alb-donau-kreis.de)