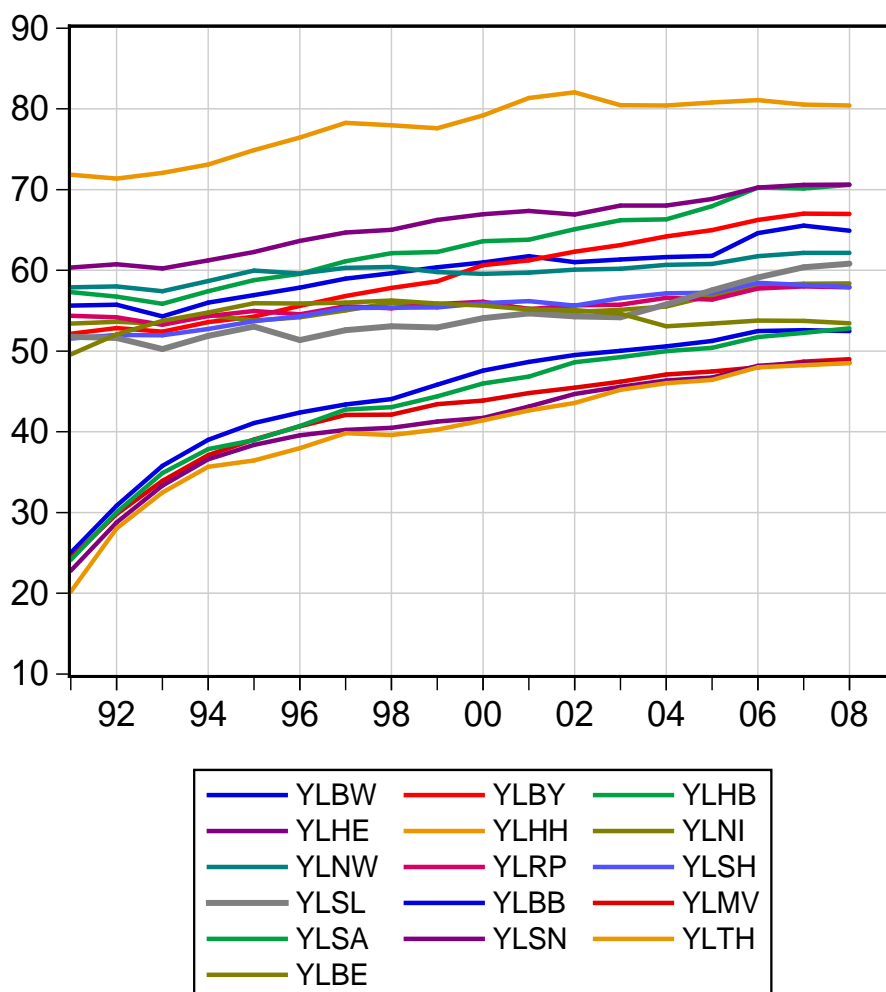


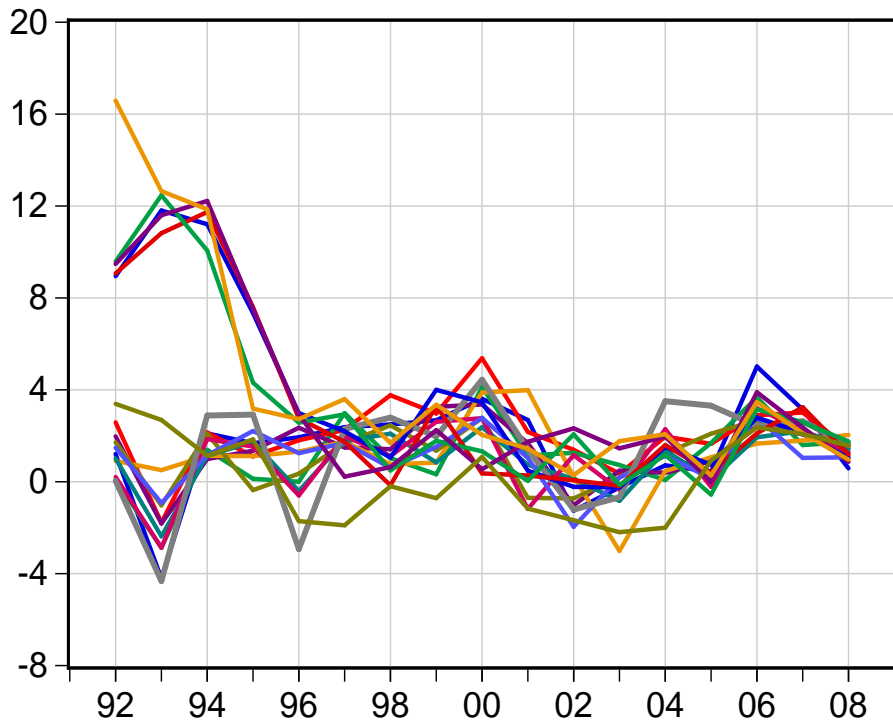


Arbeitsproduktivität – 16 Bundesländer

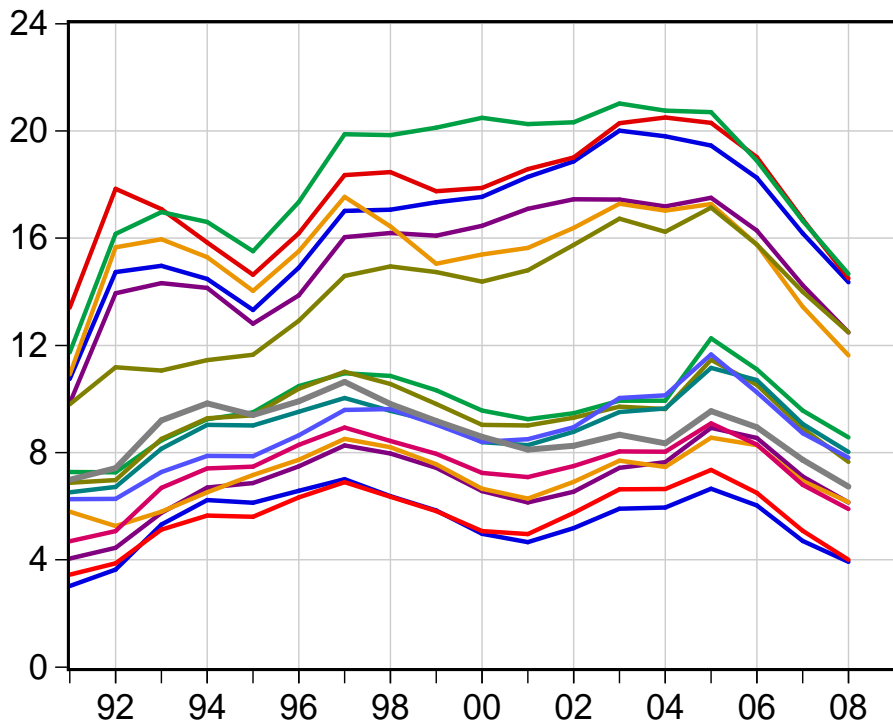


BIP pro Erwerbstätigen, in 1000 Euro

Wirtschaftswachstum

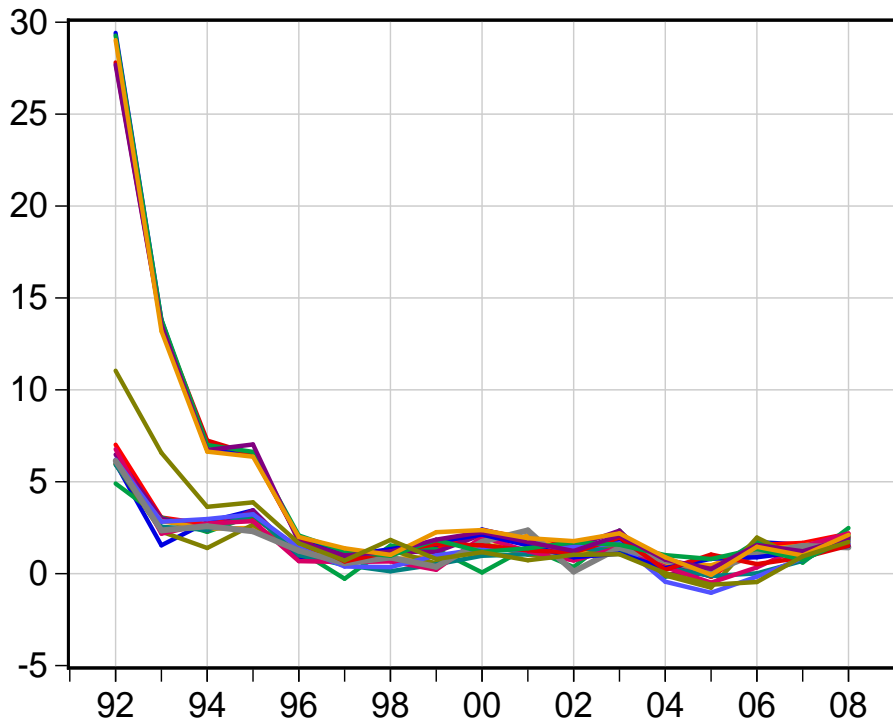


Arbeitslosenquote

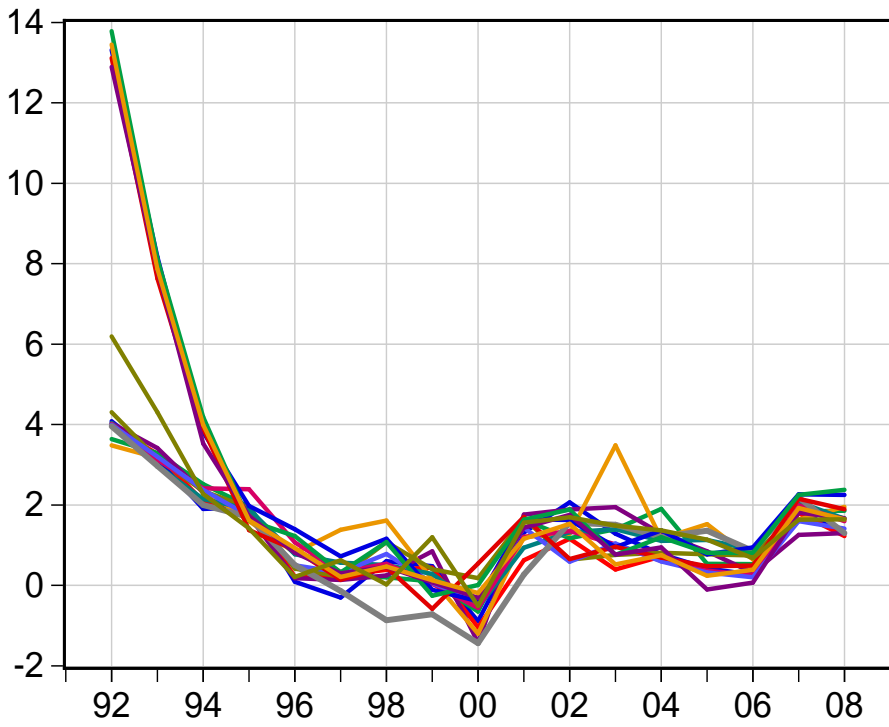


in Prozent

Lohnwachstum

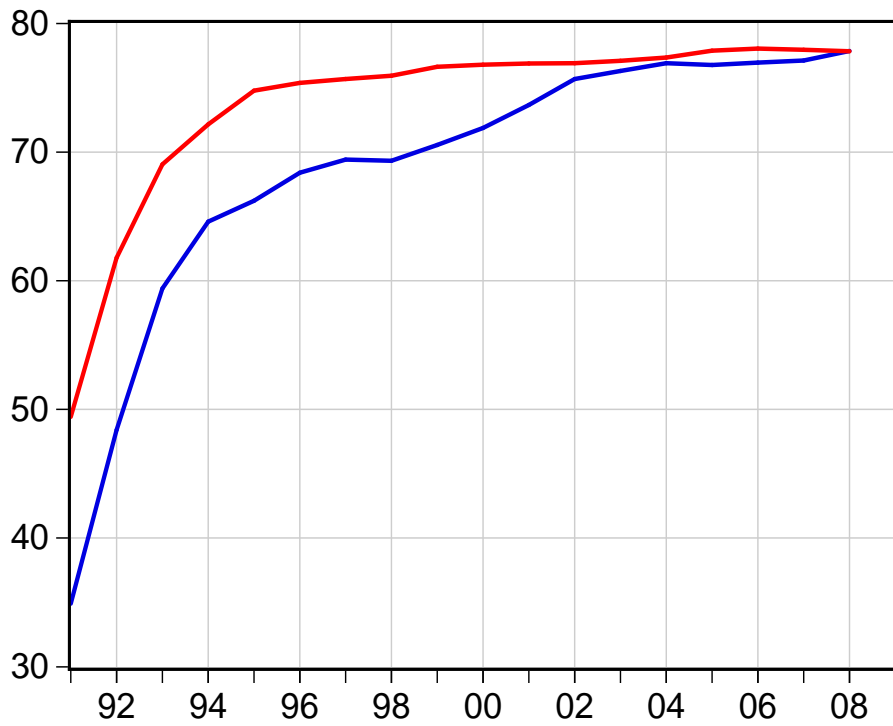


Inflation



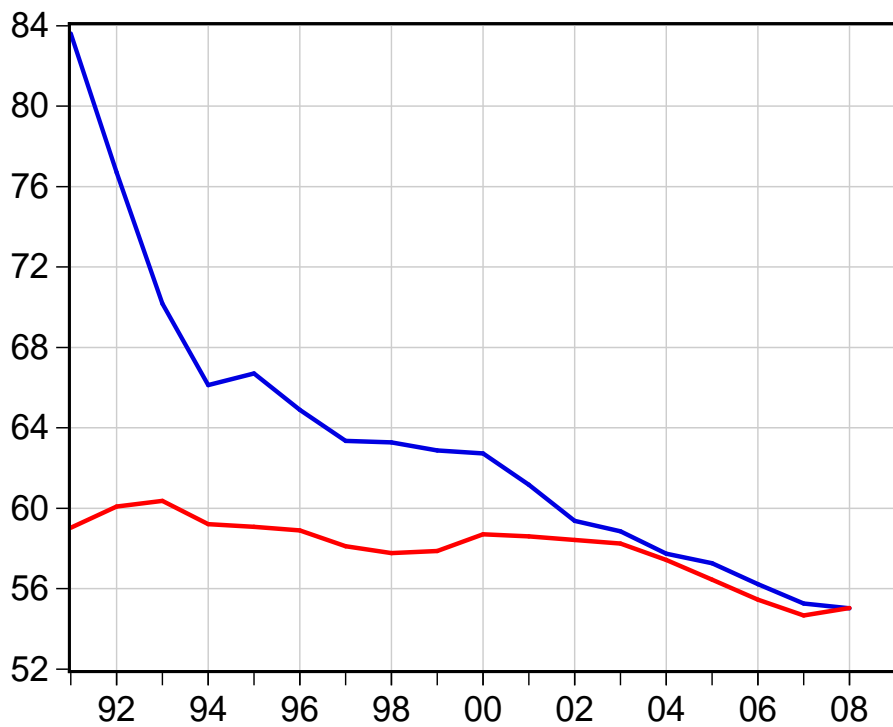
in Prozent

relative Löhne – relative Produktivität



Ostdeutschland relativ zu Westdeutschland

Lohnstückkosten – Löhne/Produktivität



Ostdeutschland Westdeutschland