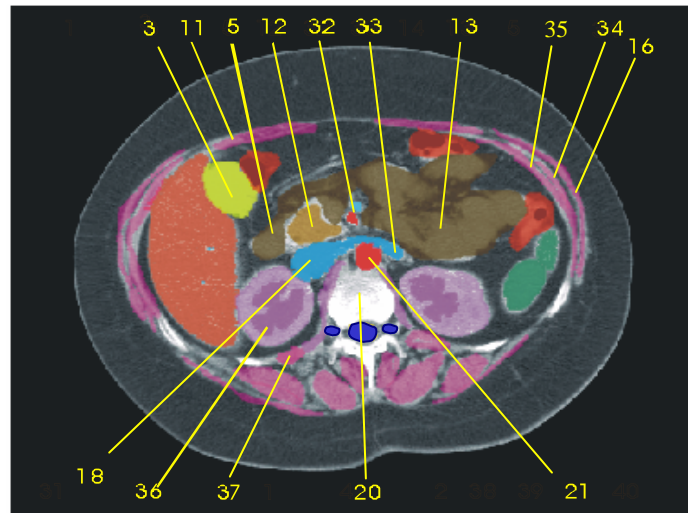
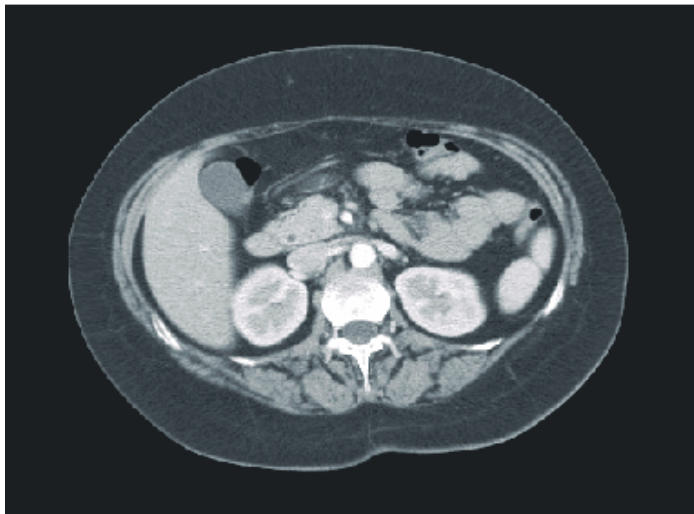
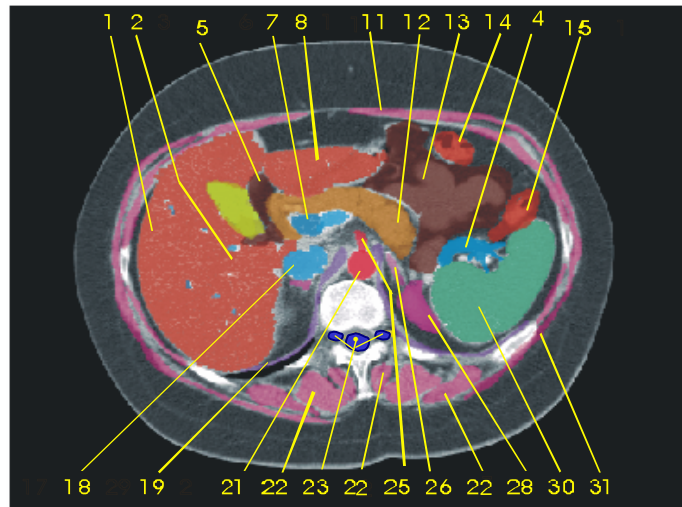
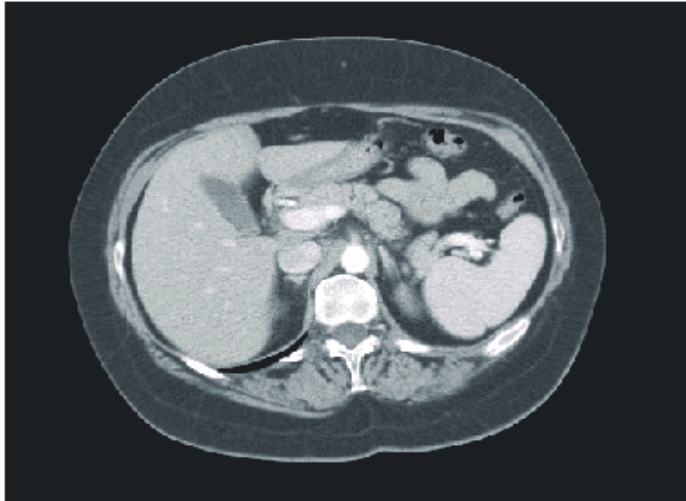


CT Abdomen



- 1 Hepar (Leber)
- 2 Lobus dexter hepatis
- 3 Vesica fellea (biliaris)
- 4 V. lienalis
- 5 Duodenum (Zwölffingerdarm)
- 7 V. portae (Pfortader)
- 8 Lobus sin. hepatis
- 11 M. rectus abdominis
- 12 Pankreas (Bauchspeicheldrüse)
- 13 Jejunum (Leerdarm)
- 14 Colon transversum
- 15 Colon descendens
- 16 M. obl. ext. abdominis
- 18 V. cava inf.
- 19 Diaphragma (Zwerchfell)
- 20 Vertebra lumbalis I
- 21 Aorta abdominalis
- 22 M. erector spinae
- 23 Medulla spinalis u. Ganglia spinalia (Rückenmark u. Spinalganglien)
- 25 A. u. V. mesenterica sup.
- 26 Glandula suprarenalis (Nebenniere)
- 28 Ren sinister (linke Niere)
- 30 Lien, splen (Milz)
- 31 M. latissimus dorsi
- 32 A. u. V. mesenterica sup.
- 33 V. renalis sin.
- 34 M. obl. int. abdominis
- 35 M. transversus abdominis
- 36 Ren dexter
- 37 M. quadratus lumborum