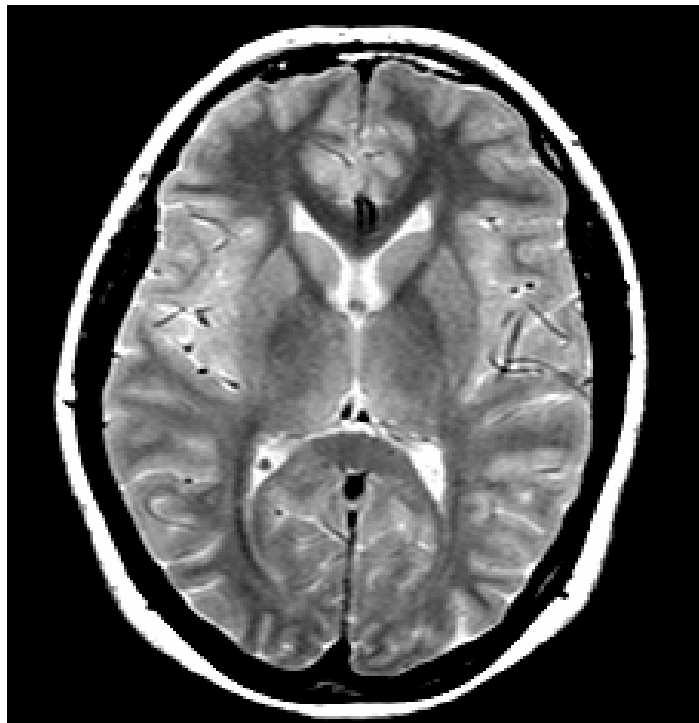
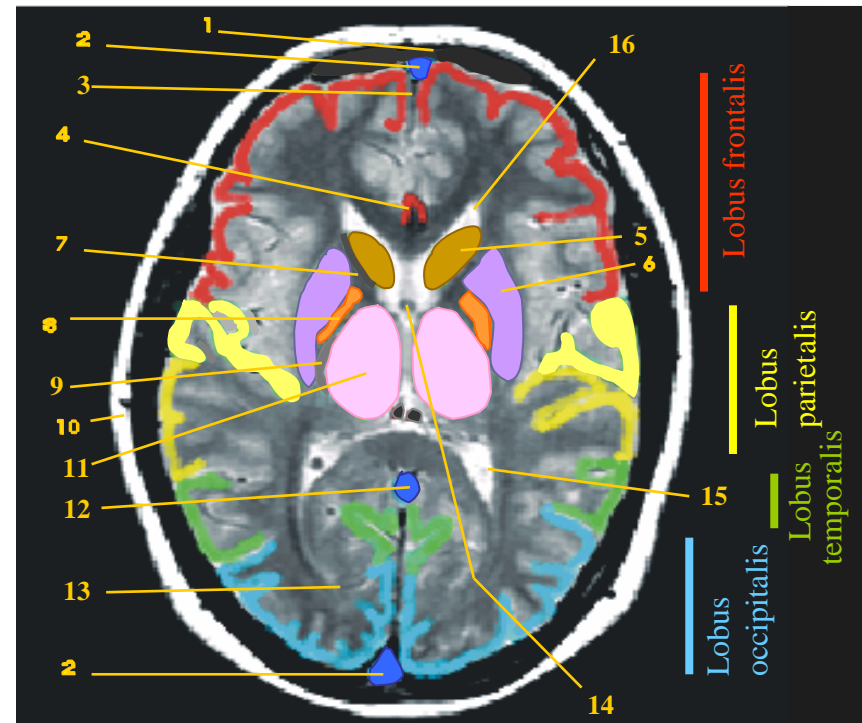


CT Gehirn, Farbkodierung - Cortex cerebri u. subkortikale Kerne

frontal



okzipital



- | | |
|------------------------------|--------------------------------------|
| 1 Os frontale | 10 Haut u. Galea aponeurotica |
| 2 Sinus sagittalis sup. | 11 Thalamus |
| 3 Fissura longitudinalis | 12 Sinus rectus |
| 4 A. cerebri ant. | 13 Radiatio optica |
| 5 Ncl. caudatus (caput) | 14 Foramen interventriculare (Monro) |
| 6 Putamen | |
| 7 Capsula int., crus ant. | 15 Cornu post. ventriculi lat. |
| 8 Globus pallidus (Pallidum) | 16 Cornu ant. ventriculi lat. |
| 9 Capsula int., crus post. | |