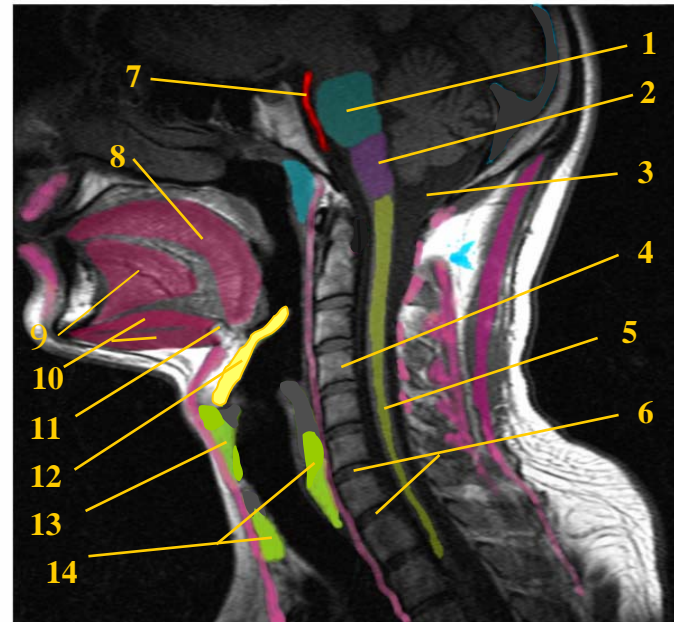
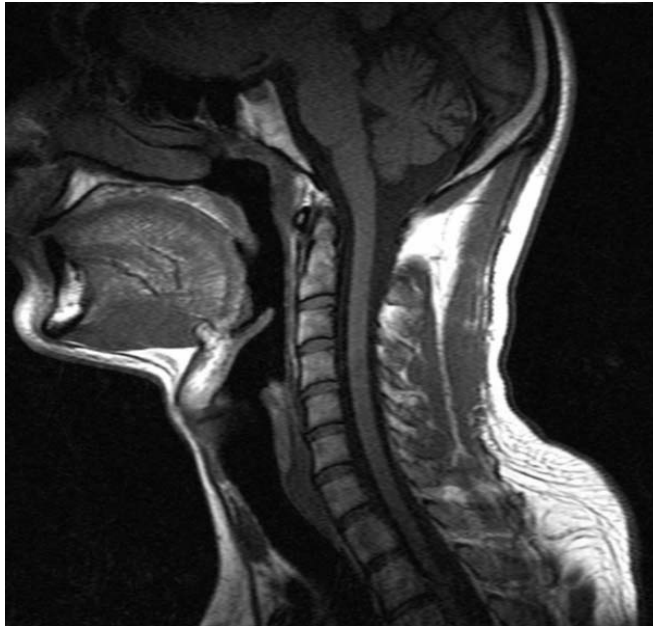


CT Kopf-Halsregion, sagittal



- 1 Pons
- 2 Medulla oblongata
- 3 Cisterna cerebellomedullaris
- 4 Vertebra cervicalis IV
- 5 Medulla spinalis
- 6 Disci intervertebrales
- 7 A. basilaris
- 8 Binnenmuskulatur der Zunge
- 9 M. genioglossus
- 10 M. geniohyoideus (oben)
u. M. mylohyoideus (unten)
- 11 Os hyoideum (Zungenbein)
- 12 Epiglottis (Kehldeckelchen)
- 13 Cartilago thyroidea
(Schilddrüse, "Adamsapfel")
- 14 Cartilago cricoidea
(Ringknorpel)